



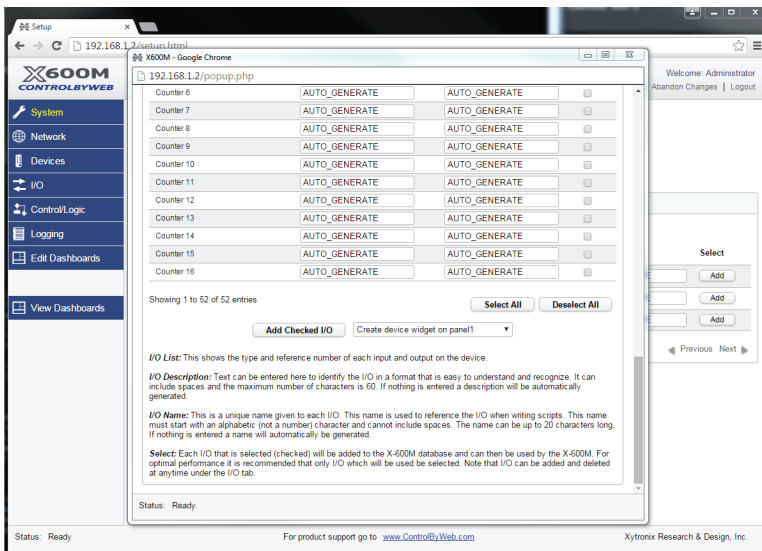
The X-19s™ expansion module is used with the X-600M controller. The X-19s has 16 relays, 16 optically-isolated digital inputs, and 4 analog inputs. Screw terminal strips provide connections to the relays and inputs.

The X-19s is suitable for use in many applications from security systems to industrial controls where a high I/O count is required. It can be used to monitor freezer doors, light switches, and pulsed flow meters as well as control moderate loads such as solenoid valves, and lights.

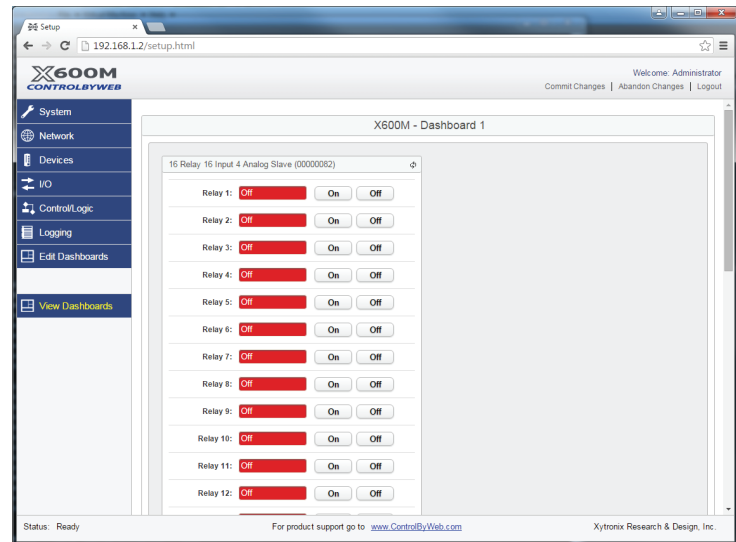
Since the X-19s functions as a slave device to the X-600M, the advanced features of the X-600M can be utilized with this module. For example scheduling, remote relay control, logging, counting, email alerts based upon single input state change or multiple input state changes, analog slope and offset calculations, and many other features are available. Attach multiple X-19s modules or a combination of expansion modules to the X-600M for an I/O combination that is tailored to your specific needs.

Features :

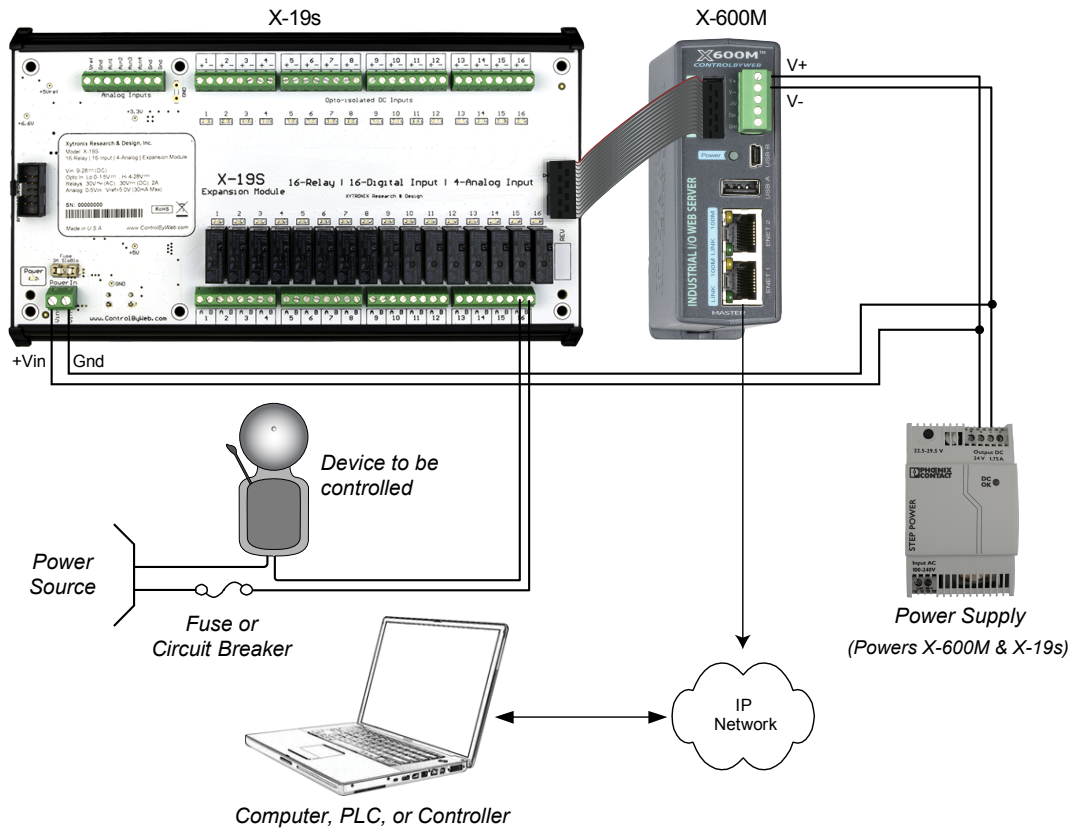
- 16 isolated relays SPST
- Relay functions: ON/OFF or Pulsed
- Great for moderate-load applications including:
 - Solenoid valves
 - Lights
 - and much more moderate load applications
- PCB terminal block, screw connection, 3.81mm pitch
- 16 optically-isolated digital inputs
- Digital input functions:
 - Monitor State
 - Control Relays
 - Control Remote Relays
 - Count
 - Input Debounce
- 4 analog inputs
- 33 LEDs for outputs and power
- Power Supply: 9-28 VDC (24V recommended)



Adding X-19s on the X-600M



View X-19s components on the X-600M Dashboard



Model: X-19s

POWER REQUIREMENTS

Input Voltage: 9-28 VDC (24V recommended)

Current: See table below for typical values at 25°C.

Power Supply	Relays OFF	Relays ON
9 VDC	20 mA	650 mA
12 VDC	16 mA	490 mA
24 VDC	12 mA	250 mA

RELAY CONTACTS

Number of Relays: 16
 Max Voltage: 30VDC, 30VAC
 Max Current: 2A
 Contact Type: SPST
 Load Type: General Purpose
 Contact Resistance: < 100 milliohms initial
 Contact Material: AgSnO2
 Electrical Life: 100K operations (Min)
 Mechanical Life: 5M cycles (Min)
 Environmental Rating: Over voltage Category II, Pollution Degree 2
 Relay Modes: ON/OFF or Pulsed
 Pulse Timer Duration: 0.1 to 86,400 Seconds (1-day)
 Relay Modes: ON/OFF or Pulse
 Pulse Timer Duration: 0.1 to 86,400 Seconds (1-day)

DIGITAL INPUTS

Number of Inputs: 16
 Type: Optically-Isolated
 Voltage Range: 4-28VDC
 Vin Hi (Min): 4V
 Vin LO (Max): 1.5V
 Current: 950uA @ 4V, 8.5mA @ 26V
 Minimum Hold Time: 5ms
 Input Isolation: 1500V
 Input Functions: Asynchronous status of the digital inputs
 Number of Counter Inputs: 16
 Maximum Count: 32-bit
 Max Count Rate: 100 Hz
 Edge Trigger: Rising, Falling or Both
 Frequency: 1Hz min, 200 Hz max

ANALOG INPUTS

Number of Inputs: 4
 Type: Single-ended channels
 Input Range: 0-5VDC
 Resolution: 12-bit
 Reference: 5.000V ±.04%, 3ppm, 30mA MAX

CONNECTORS

Expansion Connector: Ribbon cable, 2x5-position, polarized 0.100" pitch
 Relays & Inputs: PCB terminal block, screw connection, 3.81 mm pitch

LED INDICATORS

Number of LEDs: 33 (Power on, Relays 1-16, Digital Inputs 1-16)

PHYSICAL

Size:
 8.60in (218.44mm) wide
 4.95in (125.73mm) tall
 1.96in (49.78mm) deep
 Weight: 12 oz (342 g)
 Enclosure Material: PVC
 Enclosure Flame Rating: UL94 V1

ENVIRONMENTAL

Operating Temperature: -40°F to 150°F (-40°C to 65.5°C)
 Storage Temperature: -40°F to 185°F (-40°C to 85°C)
 Humidity: 5-95%, non-condensing
 Altitude: Up to 2,000m
 Indoor use or NEMA-4 protected location

ELECTROMAGNETIC COMPLIANCE

IEC CISPR 22, CISPR 24
 FCC 47CFR15 (Class B)
 EN55024 ITE Immunity (2010)
 EN55022 Emissions (2010)