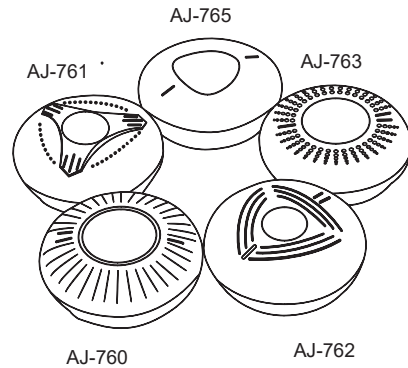
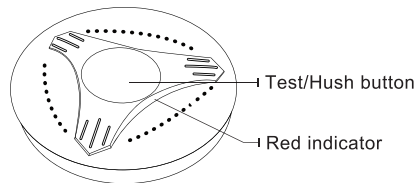
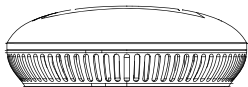


## Interconnected smoke Alarm Use

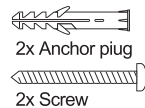
Model:



### PACKING CONTENTS



3 Volt  
Li-ion Battery

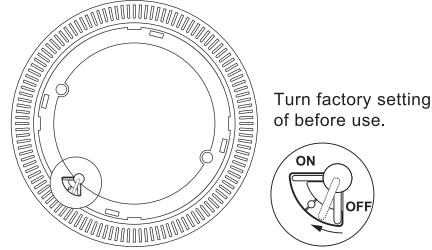


2x Anchor plug  
2x Screw  
Before installing this product, check which plugs and screws are best suited for the surface.

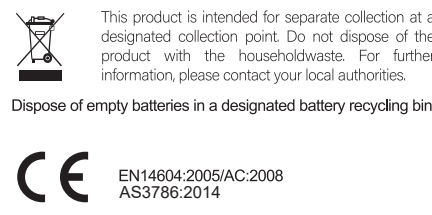
### PARAMETERS :

Alarm Module	
Working Voltage	DC 3V battery (non replaceble)
Standby current	<10uA
Alarm current	<60mA
Low voltage threshold	2.6V

Frequency range:433MHz  
Antenna gain:2.5dB  
Max. Radio Transmission Power:13dB



Turn factory setting of before use.



### Contents

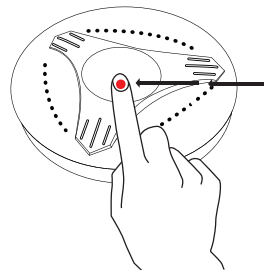
1. Set up
2. Installing the alarm
3. Where to install smoke detectors
4. Locations to avoid
5. Testing, maintenance & cleaning
6. Function description
7. What to do in case of a fire
8. Troubleshooting
9. Limitations of a smoke alarm
10. Limited Warranty

#### 1.Set up

1. Make sure to power on the smoke alarm before operation,Do not press any button before power on.

Buckle the base with the smoke alarm will turn on the smoke alarm automatically or turn on the switch manually.And then waiting for 8 seconds before pressing the button.

To connect interconnected smoke detectors, press and hold the button for any products. The green light flashes after 3 seconds, and it will flashes 3 times with a long beep. Release the button at that time, the Red LED flashes quickly and waits for other alarm device to be paired.If you need to end the pairing in advance, press the button again.



2. Press and hold the button for the second alarm device. The green light flashes after 3 seconds, and it will flashes twice with one short beep. Release the button at that time, the Red led will flashes slowly to be paired with the previous detector. When it paired successfully, it will flashes in red for three times along with a long beep.

If the device has been paired with other group before, it will exit directly after the red light flashes with three long beeps. f you want join the new group, please clear paired data firstly.

3. Clear paired data: Press and hold the button, green light flashes after 3 seconds. Release the button after it flashes four times with a short beep. When it cleared the data successfully, the device will issue a long beep and the green LED flashes three times slowly.

4. Testing: Press the button on the top of the detector,all the connected smoke alarm sound. It takes 10-15 seconds. Be careful not to press any button on the alarm during this time.

Testing the smoke alarm monthly.

5. Silence : Press the button once and waiting for about 2 seconds to silence the alarming.

Until detectors triggers, means detect the real fire,Hush function works.

**Do not try to hush when detectors are just under testing.**

6. Alarming:when smoke alarm detected the real fire, all the smoke alarm will sound. It is normal to be linked successfully in 9 seconds

#### Installing the alarm

Be careful not to press the button on top of the alarm module unless you intend to do so. Pressing this button will cause the alarm to sound, the sound is very loud and may cause harm to your hearing.

##### 1.1 Preparation

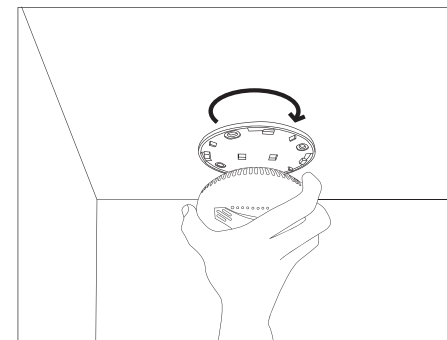
Determine how many alarms you need and where best to install them. See § 3 for more information on locations and § 4 for locations to avoid.

Before installing this product, check which plugs and screws are best suited for the surface.

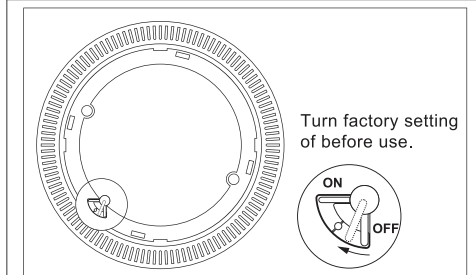
##### 2.2 Installation

Disconnect the alarm module from the bracket by twisting the bracket counter clockwise.

The smoke detector will power on automatically after the alarm module is buckled on to the bracket.



You can also turn on the alarm module manually by turn off the factory setting in the Alarm Module.



Turn factory setting of before use.



**Alarm module** > Disable the factory lock by pushing the lever clockwise.

After installing the alarm, attach the alarm module back on the bracket. Turn till you feel a click to ensure the Alarm Module is buckled in to place.

#### Where to install smoke detectors

**We recommend at least one smoke alarm per floor, per room.**

##### 3.1

As a minimum, smoke alarms should be located between sleeping areas and potential sources of fire such as living rooms and kitchens. In single storey homes with one sleeping area, a smoke alarm should be installed in the hallway, as close as possible to the living accommodation. To ensure audibility in bedrooms, no smoke alarm should be further than 3m away from any bedroom door. It may be necessary to install more than one smoke alarm, particularly if the hallway is more than 15m long. In single storey homes with two separate sleeping areas, a minimum of two smoke alarms is required, one outside each sleeping area. In multilevel or split level homes, as a minimum one smoke alarm should be installed on the ground floor between the stair case and any rooms in which a fire might start and on each storey in circulation areas which form part of escape route(normally hallways and landings).

##### 3.2

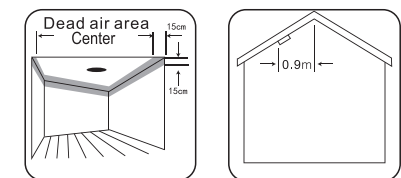
Additional alarms should be installed in bedrooms in anticipation of fires originating here, caused by faulty wiring, lights, appliances, smokers or other hazards.

##### 3.3

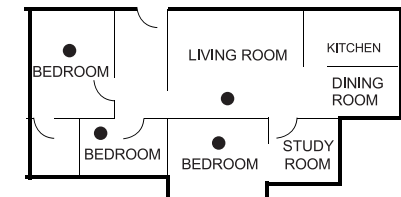
For best protection, smoke alarms should be installed in every room in your home, apart from those listed in the Section 4.

##### 3.5

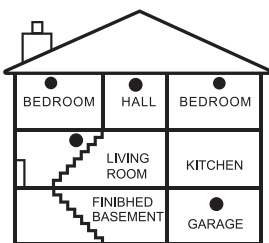
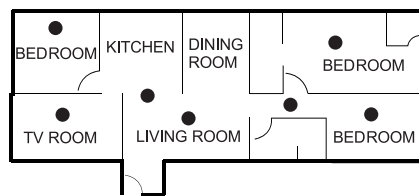
It is suggested that each floor form a network group. A network group is formed within a circle of 20 meters in Diameter to avoid linkage alarm due to distance.



Single Story  
one sleeping area



Single Story  
more than one sleeping areas



● Smoke alarms for limited protection

## Locations to avoid

### DO NOT locate smoke alarms:

- In turbulent streams of air such as near fans, heaters, doors and windows, etc. These can draw smoke away from the alarm.
- In high humidity areas such as bathrooms and shower rooms as high humidity can trigger the alarm, or where temperature exceeds 40 °C or below 0 °C.
- At the apex of an "A" frame ceiling. "Dead air" at the top may prevent smoke from reaching the alarm in time to provide early warning.
- Less than 300mm (12 inches) from the wall when mounted on the ceiling.
- In insect-infested areas. Tiny insects may affect performance.
- In kitchens, boiler rooms, laundry rooms, garages. Combustion particles from cooking or car exhausts and dust and moisture could trigger the alarm.
- In very dusty or dirty areas. Dirt and dust can build up and impair performance.
- Within 300mm (12 inches) of light fittings or room corners.
- In locations which would make routine testing or maintenance hazardous (e.g. over a stairwell).
- On poorly insulated walls or ceilings.
- Near objects such as ceiling decorations which might impede the path of smoke to the alarm.
- Within 1500mm (5 feet) of fluorescent light fittings.

## Testing, maintenance and cleaning

This unit has been designed to be as maintenance-free as possible, but there are a few simple things you must do to keep it functioning properly:

### 5.1 Test each alarm at least once a week

Keep at arms length distance to the alarm during the test. The alarm is loud in order to alert you in case of an emergency and can be harmful to your ears. Press the Test/Hush button for a duration of 0.1 seconds. The alarm will sound a few short, loud beeps. Upon releasing the button, the sound will stop.

### 5.2 Reset the alarm

Turn off the smoke alarm switch and waiting for 10 seconds, and pairing again.

Replace or return the alarm if the test does not function properly after completing these steps.

### 5.3 Cleaning

Clean the smoke alarm at least once a month; gently vacuum the outside of the smoke alarm using your household vacuum's soft brush accessory. Test the smoke alarm after cleaning. Never use water, cleaners or solvents since they may damage the unit.

If the smoke alarm becomes contaminated by excessive dirt, dust and/or grime, and gives unwanted alarms, replace the unit immediately.

## Function Description

**Low voltage alarm:** When the built in battery voltage of the smoke detector is below 2.6V, the red indicator light flashes once about every 55 seconds, accompanied by a 'Di' sound.

**Smoke alarm fault:** The LED of the smoke alarm flashes once every 8 seconds and is accompanied by a 'Di'sound.

If the device operates normal, the green LED indicator flashes once about every 55 seconds.

## What to do in case of a fire

**Contact your local fire department for what you can do in case of a fire.**

## Trouble shooting

**Problem:** When press the button the smoke alarm keep beeping,

**Solution:** This is the right instruction from smoke alarm, the beeping will stop automatically after 10s. Be careful not to press any button on the top of the alarm unless you intend to do so. Test the smoke alarm monthly.

**Problem:** When test the smoke alarm the sound can not stop by test button.

**Solution:** Hush function only available when detect the event, Hereby cannot hush when the detector is testing, Do not press smoke alarm test button twice when smoke alarm is testing, otherwise will extended alarm time.

**Problem:** Smoke alarm is being triggered when the residents are cooking or showering.

**Solution:** 1, clean the detector, refer to section 5 "Testing, maintenance and cleaning"; 2, install the detector to another place, refer to section 3 "Installation Location".

## Limitations of some alarms

Smoke alarms have played a key role in reducing deaths resulting from home fires worldwide. However, like any warning device, smoke alarms can only work if they are properly located, installed, and maintained, and if smoke can reach the alarms.

- Smoke alarms may not wake all individuals.
- Smoke alarms cannot detect fires if the smoke does not reach the alarms. Smoke from fires in chimneys or walls, on roofs or on the other side of closed doors may not reach bedroom or sleeping area
  - especially if the bedrooms or sleeping area doors are closed at night.
- Smoke alarms may not have time to sound before the fire itself causes damage, injury, or death, since smoke from some fires may not reach the unit immediately. Examples of this include persons smoking in bed, children playing with matches, or fires caused by violent explosions resulting from escaping gas.
- Smoke alarms are not foolproof. Like any electronic device, smoke alarms are made of components that can wear out or fail at any time. You must test the unit weekly to ensure your continued protection. Smoke alarms cannot prevent or extinguish fires. They are not a substitute for property or life insurance.
- Smoke alarms have a limited life. The unit should be replaced immediately if it is not operating properly. You should always replace a smoke alarm after 10 years from date of purchase. Write the purchase date on the space provided on back of unit.

## Limited warranty

**Copyright Notice:** The copyright of this manual is owned by the manufacturer. All copyright is reserved. Except as permitted by copyright law, no one may copy, adapt or translate without prior permission.

**Warranty:** The contents of this manual are subject to change without prior notice. For the latest information, please contact the manufacturer. The manufacturer is not liable for any damage caused by errors in this manual and is not liable for damages caused by the provision or use of this manual.

The manufacturer can never be made liable for loss and / or damage of whatever nature, including incidental and / or consequential loss, arising from the fact that the signal from the smoke alarm did not sound during smoke or fire.



www.direktronik.com  
ID 000700000

1008