

Item nr: 20115269

**DIREKTRONIK**

# ST3200H 7 inch PON OTDR

Multi-wavelength and multi-dynamic options

Detect 1:64 Splitter

SM + MM Optional

OPM VFL LS

iOLM / Event Map



**DUST PROOF/WATER PROOF**

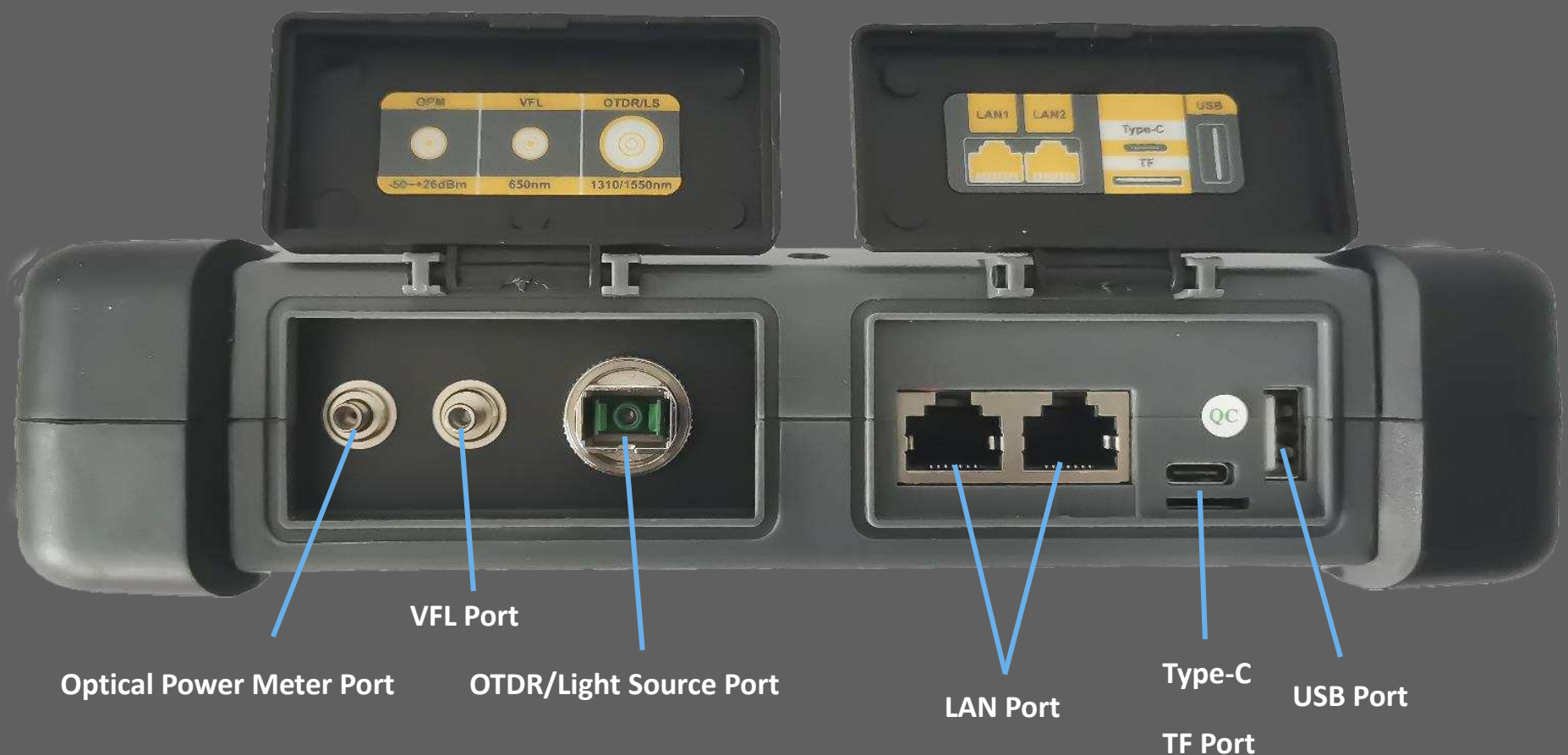


# Shock Resistance

## 1.5 Meter Drop Test



# Interface Button Introduction



## Designed for Efficiency

Integrated OTDR/light source, optical power meter VFL , Ethernet test, insertion loss, microscope multi-function in-body



VFL



OPM



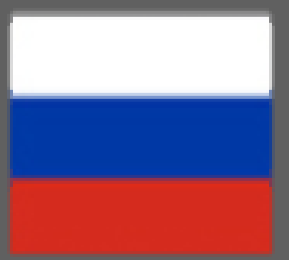
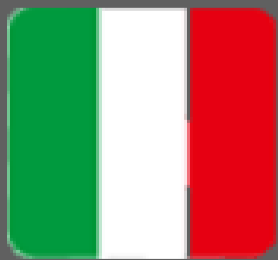
OTDR

# Intelligent Optical Link Mapper

## Event Map



# Customizable Language



# RJ45 Cable Test

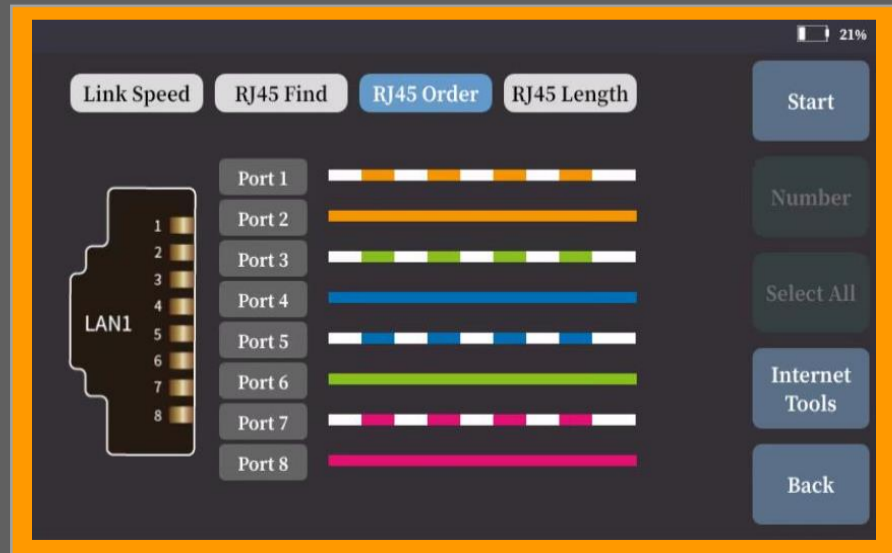
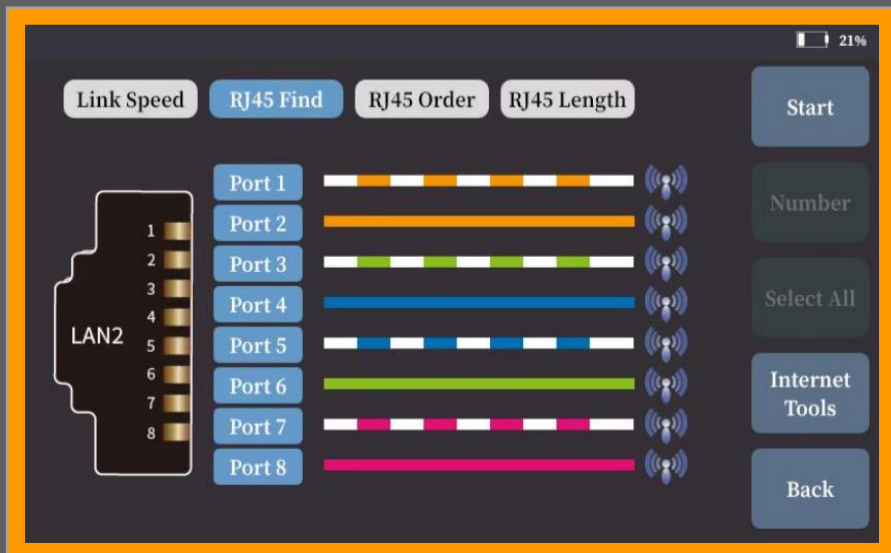
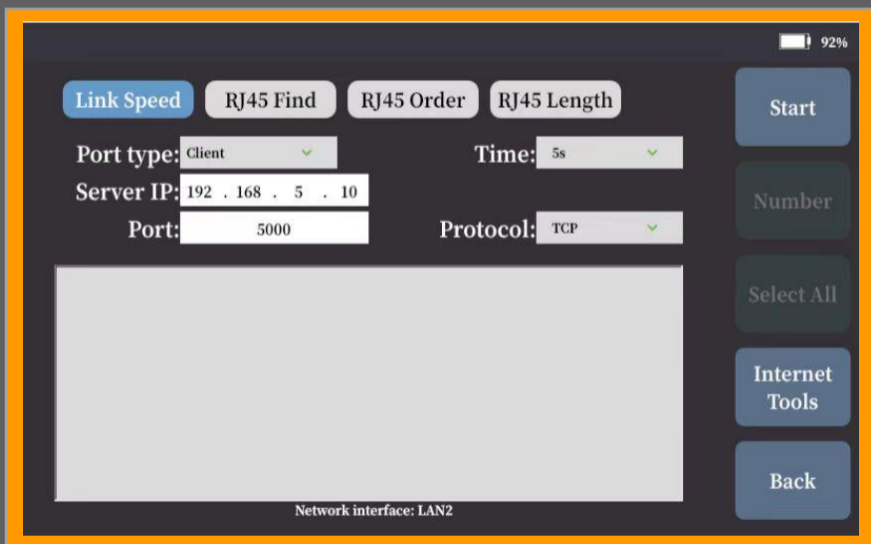


Link Speed Test

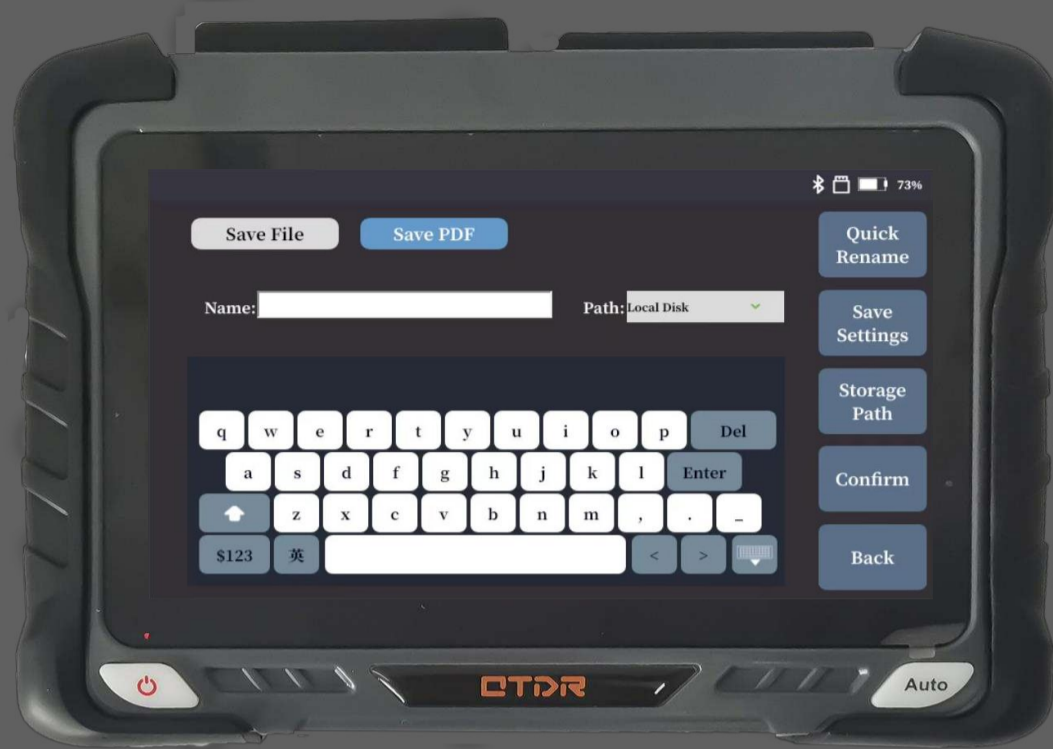
RJ45 Cable Tracker

RJ45 Cable Length

RJ45 Line Sequence



# Testing Report



Easily Generate in 3 Ways:  
 PDF Format  
 SOR Format  
 JPG Format

## Event map report

Pass

### File information:

File name:  
 Device: Fiber No.: Optical cable No.:  
 Cable code: Start: End:  
 Item type: Item code: Company:  
 Operator: Fiber type: Test date:

### Measurement conditions:

Mode:Average Wavelength:1550nm Pulse:10000ns  
 Range:125.00km Refractivity:1.46830  
 Spacing:4.08353m

### Analysis conditions:

reflex TH:72dB Non-reflex TH:0.2dB End TH:10dB

### Pass/Fail TH:1550

Slope:0.30dB/km Total loss:45.00dB Event loss:0.50dB  
 Connection loss:1.00dB reflex:-40.00dB Splitter 1/4:7.50dB  
 Splitter 1/8:10.50dB Splitter 1/16:13.50dB Splitter 1/32:16.50dB  
 Splitter 1/64:20.00dB

### Link information:

The overall link under test is better

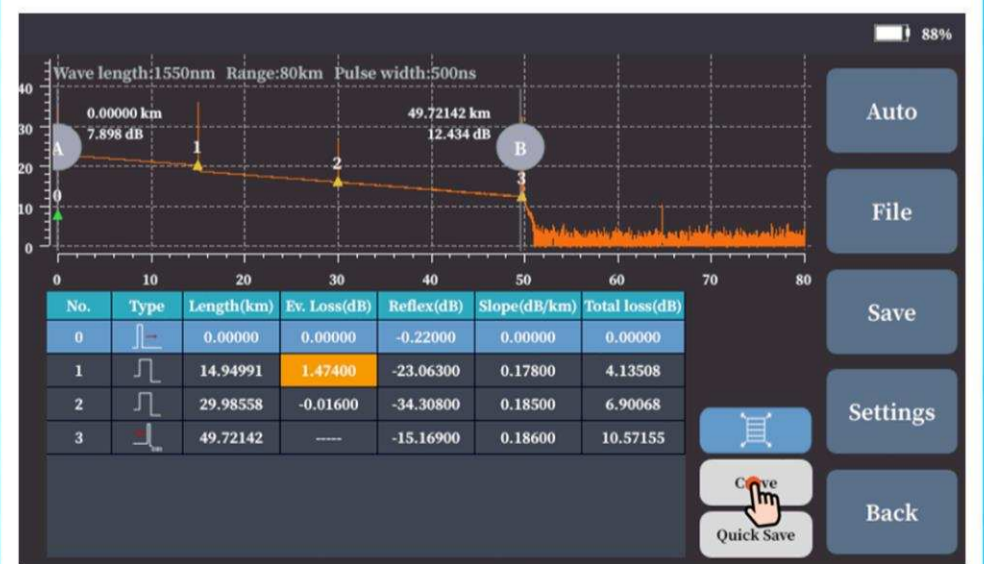
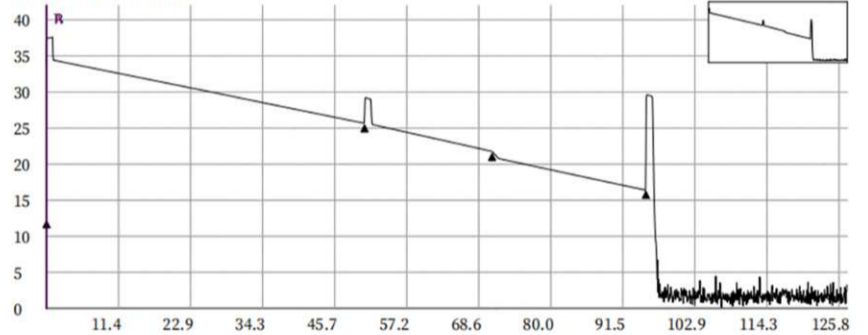
### Event list:1550nm

No.	Type	Length(km)	Loss(dB)	Reflex(dB)	slope(dB/km)	Total
0	Start	0.00000	0.00000	-41.60000	0.00000	0.00000
1	Connector	50.48879	-0.06067	-35.46433	0.17843	8.92600
2	Connector	70.71860	0.79611	0.00000	0.19544	13.66841
3	End	95.14629	0.00000	-15.25607	0.18760	18.25928

## Event map report

Pass

Curve:1550nm



# Ethernet Test





Model	A	B	C	D	E	F	G	H	I	J	K	L	M	N	O	P
Type	SM													MM	SM/MM	
Wavelength	1310/1550nm					1310nm /1490nm /1550nm		1310nm /1550nm /1625nm		1310nm /1550nm /1650nm		1310nm /1550nm /1625nm /1650nm	1310nm /1490nm /1550nm /1625nm	850nm/ 1300nm	850nm /1300nm /1310nm /1550nm	
Dynamic Range	32/30	35/33	38/36	42/40	45/43	32/30/30	37/35/35	32/30/30	37/35/35	32/30/30	37/35/35	37/35/35	37/35/35/35	26/28	26/28/35/33	26/28/37/35
Event Blind Zone	0.8		0.5m			0.8m	0.5m	0.8m	0.5m	0.8m	0.5m	0.5m	0.5m	1m		
ATT Blind zone	4		3.5m			4m	3.5m	4m	3.5m	4m	3.5m	3.5m	3.5m	6m		
Test Range	100m/500m/1.25km/2.5km/5km/10km/20km/40km/80km/125km/260km/420km															
Pulse Width	3ns/5ns/10ns/20ns/30ns/50ns/80ns/100ns/200ns/300ns/500ns/800ns/lus/2us/3us/5us/8us/10us/20us															
Ranging accuracy	± (0.75m+ Sample interval+Q0025% XTest distance)															
Loss accuracy	± 0.03d B/d B															
Sample Points	≥256k															
Sample Resolution	0.015m~16m															
Reflection Accuracy	±2dB															
Loss Resolution	0.01dB															
Loss Threshold	0.01dB															
File Format	SOR Standard File Format															
Loss Analysis	4-point method /5-point method															
Laser Safety Level	Class II															
Refresh Rate	4Hz(Typ.)															
Data Storage	Internal storage: 2GB, 200,000curves; External storage: 64GB															
Connector	FC/UPC (Interchangeable SC ST)															
Data Interface	USB-A. Type-C port, RJ45 LAN 10/100Mbit/s															
<b>OPM</b>																
Wavelength range	800nm~1700nm															
Connector	Universal FC/SC/ST															
Test scope	-50dBm~+26dBm/-70dBm~+6dBm															
Uncertainty	±5%															
Calibration wavelength	850nm/980nm/1300nm/1310nm/1490nm/1550nm/1625nm/1650nm															
<b>LS</b>																
Laser Type	FP-LD															
Wavelength	Consistent with OTDR output wavelength															
Output power	>-5dBm(SM fiber)															
Mode	CW/270Hz/1kHz/2kHz															
Stability	CW, ±0.5dB/15min (Test after 15 minutes of preheating)															
Connector	FC/UPC (Interchangeable SC、ST) VFL															
Wavelength	650nm + 20nm															
output power	≥10mW															
Mode	CW/1Hz/2Hz															
Connector	FC/UPC (Interchangeable SC、ST)															
The Optical Loss Test index refers to the above light source and optical power meter index.																
<b>Others</b>																
Display	7 inch color LCD + touch screen Resolution: 800x480															
Power supply	Type-C adapter: Input: 100V~240V , 50/60Hz ,Output: 5V/3A,9V/2A,12V/1.5A Lithium battery : 3.7V,10400mAh															
working temperature	-10°C~+50°C															
Storage temperature	-40°C ~+70°C															
relative humidity	0~95%, Non Condensing															
Weight	W 1.2kg															
Size	215mm x 160mm x50mm															
Functions of Host: OTDR/VFL/LS/OPM/Event Map/End Detection/Optical Loss Test/Ethernet test/Remote test/File management																

PON OTDR Module							
Model	P1	P2	P3	P4	P5	P6	P7
Wavelength	1310nm±20nm 1550nm±20nm	1625nm±20nm (Filtered)	1650nm±5nm (Filtered)	1310nm/1550nm ±20nm 1625nm±15nm (Filtered)			1310/1550nm±20nm 1650 ±5nm (Filtered)
Filter	/	High pass>1595nm Isolation>40dB (1270nm-1585nm)	Bandpass1650nm± 7nm Isolation >40dB (1650nm±10nm)	High pass>1595nm Isolation >40dB (1270nm-1585nm)			Bandpass1650nm ±7nm Isolation>40dB (1650nm±10nm)
FiberType	G.652						
Max Dynamic Range	37/35dB	38dB	38dB	38/36/36dB	40/38/38dB	42/40/40dB	38/36/36dB
Event Blind Zone	0.5m						
ATT Blind Zone	3.5m						
PON Blind Zone	30m						
Test Range	100m/500m/1.25 km/2.5 km/5km/10 km/20km/40km/80km/125km/260km/420 km						
Pulse Width	3ns/5ns/10ns/20ns/30ns/50ns/80ns/100ns/200ns/300ns/500ns/800ns/1us/2us/3us/5us/8us/10us/20us						
Ranging accuracy	± (0.75m+ Sample interval+0.0025% xTest distance)						
Loss accuracy	0.03dB						
Sample Points	>256k						
Sample Resolution	0.015m~16m						
Reflection Accuracy	±2dB						
Loss Resolution	±0.001dB						
Loss Threshold	0.01dB						

## Configuration List

NO.	Name	Quantity	Remarks
1	Host	1	Battery included
2	AC/DC adapter	1	
3	U disk(including analysis software/User's manual	1	
4	Touch pen	1	
5	Data line	1	
6	OTDR SC adapter	1	
7	OPM SC adapter	1	
8	Fast operating manual	1	
9	Instruction manual	1	
10	Calibration certification	1	
11	Certificate/warranty card	1	
12	Clean cotton piece	10	
13	Leather knob	1	
14	Special backpack for instrument	1	

# DIREKTRONIK