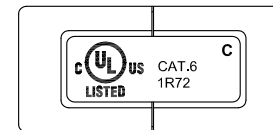
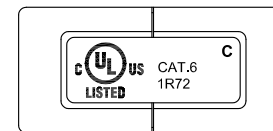
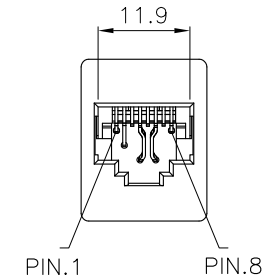
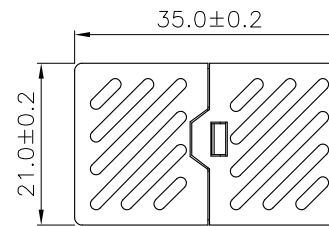
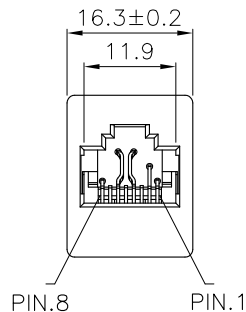


SCALE 1/1



Specification :

Material :

1. RJ45 Jack :
  - 1-1. Housing : ABS, UL 94V-0.
  - 1-2. Contact Bracket : PC, UL 94V-2, Transparent color.
2. RJ45 Jack Contact :
  - 2-1. Material : Phosphor Bronze with Nickel plated.
  - 2-2. Finish : 50 micro-inch Gold plated on Plug contact area.
3. PCB : FR4, UL 94V-0.

Performance :

- a. Insertion force : 20N max.(IEC 60603-7-4)
- b. Retention strength : 7.7 kg between Jack and Plug.
- c. Operating temperature : -10°C to 60°C. (ISO/IEC 11801, ANSI/TIA/EIA 568 C.2)
- d. Life(mating cycles) : 750 cycles min. (ISO/IEC 11801, IEC 60603-7-4)
- e. The Cat.6 transmission performance is in compliance with the ANSI/TIA/EIA 568 C.2 standard.

Remark : AAEBB01011411XX  
(1)

- (1) XX : Color  
01=Black, 05=White, 13=Ivory



GENERAL TOLERANCE OF DIMENSIONS X.XXX ±0.005 X.XX ±0.05 X.X ±0.1	DRAWING	08.SEP.2016	YHF	<b>DIREKTRONIK</b> Dataprodukter utöver det vanliga	
	CHECK	08.SEP.2016	DAY		
	APPROVAL	08.SEP.2016	JAIMY		
		DATE	NAME		
	SCALE	1/1 (A4)	UNIT	mm	DES.: CAT.6 UNSHIEDED IN-LINE COUPLER
			DRAWING NO.	AAEBB01011411XX JE315A-C6-XX(SA7)	
			DRAWING CLASSIFICATION	S	SHEET 1 OF 1

