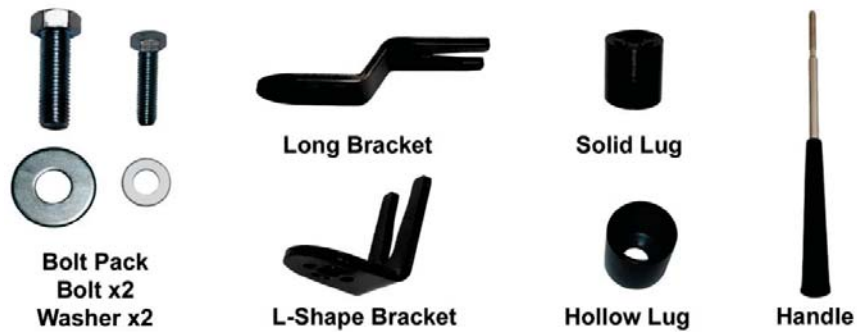


Best.nr: 135-0810

INSTALLATION MANUAL



In Box Accessories



A. Mounting Base Installation

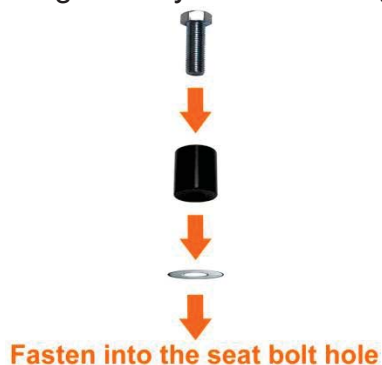
1. To begin the installation of the Mobotron stand, find the seat bolt in the front left corner of the passenger seat that fasten the seat rails. Remove the left front bolt with the correct size socket that you pre-determined.
2. Choose the mounting option that best fit your vehicle seat arrangement.
For best results try and get the stand mounting lug as vertical as possible.



3. Mounting base options: There are several options to set up your mounting base. Please find the setup option that best fits the seat bolt and seat rail design under the front left corner of your passenger seat.

Regular Mounting Base Setup:

If the seat bolt underneath your passenger seat is more accessible, you may fasten the lug directly without using the brackets.



Alternative Mounting Base Setup

If the seat bolt underneath your passenger seat is less or not accessible, please choose the proper alternative mounting setup listed below.

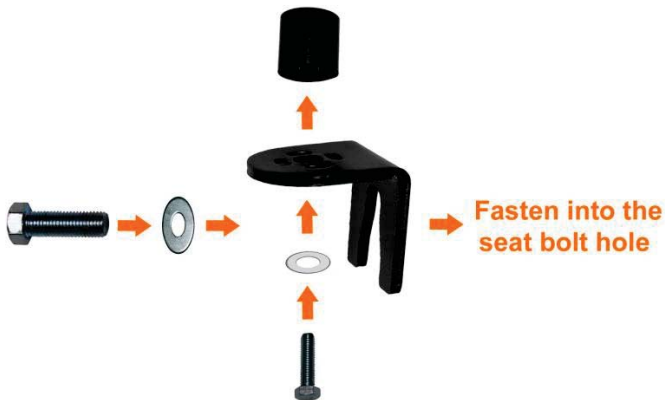
Alternative I (use long bracket in upper position)



Alternative II (use long bracket in lower position)



Alternative III (use L-shape extension bracket)



Alternative IV (use

Universal Floor Mount*)

*Please refer to Optional Accessories section in Page 8.



B. Assembling of Aluminum Stand & Plastic Deck

1. Release the bottom quick-release lever of the stand and place the base over the mounting lug.



2. Turn to the desirable position and push back the quick-release lever to fix it in place.



3. Loosen the bottom screw knob and adjust the angle of the bottom joint of the stand.



4. Loosen the quick-release lever on the telescoping tube. Adjust the height and angle that best fits your working position. After finish, tighten the lever.



5. Loosen the lever on the teeth-locking joint and adjust the angle of the upper tube. When finished, tighten the lever.



6. Place the plastic deck on the top of the aluminum stand and then plug in and tighten the handle.



7. Set your device on the deck and adjust the four sliding supports (two in the front and two in the back).



C. Trouble Shooting

1. What if the space under my passenger seat is too small for me to put the entire aluminum stand over the mounting lug?

In some vehicles, the seat rail structure makes it difficult to access the seat bolt.

In this case, you may disassemble the bottom mounting part by completely loosening the quick-release lever.

Plug in and lock the bottom mounting part on the mounting lug, then assemble the bottom mounting part with the aluminum tube.



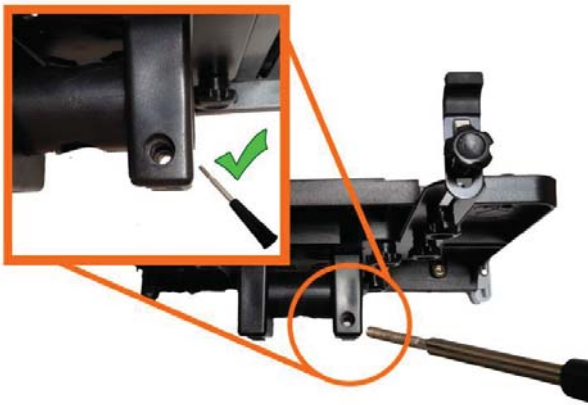
2. Why the deck cannot hold its position on the top of the aluminum Stand?

When the handle is not tightened or installed properly, the deck cannot keep its position for holding any device.

Please placing the handle through the hole underneath the plastic tray as indicated.

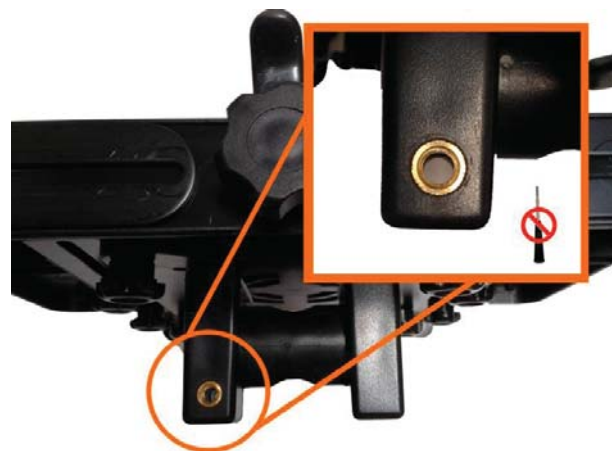
Correct:

Make sure you plug the handle goes into the hole without metal brass.



Incorrect:

Plug the handle into the hole with the metal brass.



3. How to Fit Thinner Tablet on the Deck?

The deck is designed to fit different tablets with different thicknesses.

The original setting is for 13.4 mm or thicker tablets.

With the following steps, you can make the deck to fit thinner devices.

- a. Find two front sliding brackets underneath the tray. In the original setting, the two front sliding brackets are facing up.



- b. Unscrew the knobs on the sliding brackets and place it upside down and make sure the sliding brackets are facing down.



- c. Tighten the sliding brackets and rubber stoppers with the knobs.



- d. Put the thinner tablet on the deck.



Telescoping Support Brace

135-0809 telescoping support brace provides extra stability and support for the universal laptop / device stand.



Universal Floor Mount

135-0807 Universal Floor Mount is the ideal solution for mounting your universal laptop / device stand when the under seat bolt is not accessible. It is required to drill 4~6 holes to lock it onto the floor of the vehicle.



Clamp-On Mounting Base

135-0808 C-clamp-on mounting base allows you to put the universal laptop / device stand anywhere. The adjustable mounting base can perfectly fit all kinds of tables, desks, even bad frames in different thicknesses.

