

INSTALLATION INSTRUCTIONS

PSD-S180

STEP 1

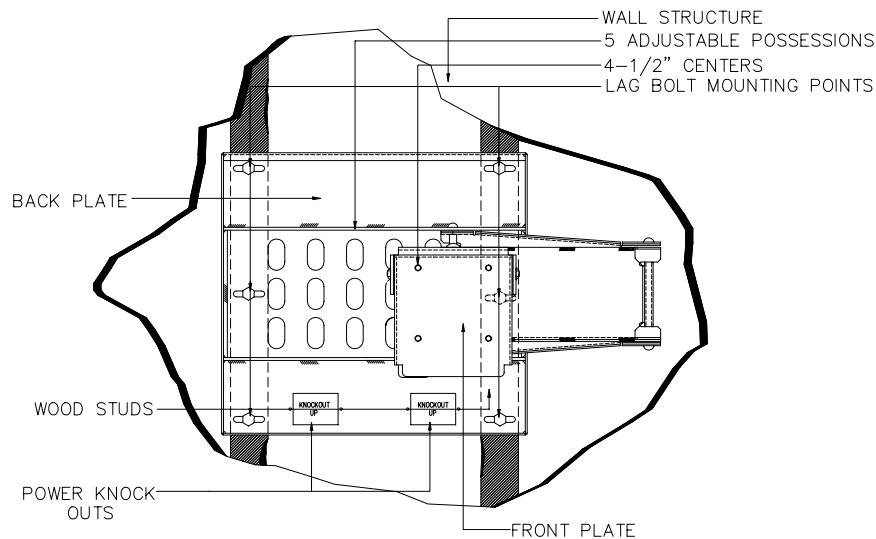
Choose the proper location where the PSD-S180 wall arm would be located. For most 40" to 50" plasma displays leave 3" of clearance from any interference from the center of the plate to the end of the arm. Height should be taken in consideration upon your standards.

OPTION: For custom applications the back plate has (5) adjustable positions for the swing arm. By removing the pin that holds the arm in place the arm could be adjusted to serve your purpose.

STEP 2

Locate the 16" centers of the wood studs that are found behind the wall structure. (2 persons are required to complete the next step). Raise the PSD-S180 wall arm and mark the six (6) lag bolt mounting points found in the back plate. Use the lag bolts (supplied) to secure it to the wall wood studs. For best results secure one side first, Level the plate and secure the opposite side. Secure the rest of the plate with the remaining lag bolts (supplied). All electrical purposes should be made at this time. If using the knockouts on the bottom of the plate use a hammer to punch out the tab welds holding the plate.

Do not over tighten bolts. See Figure 1



STEP 3

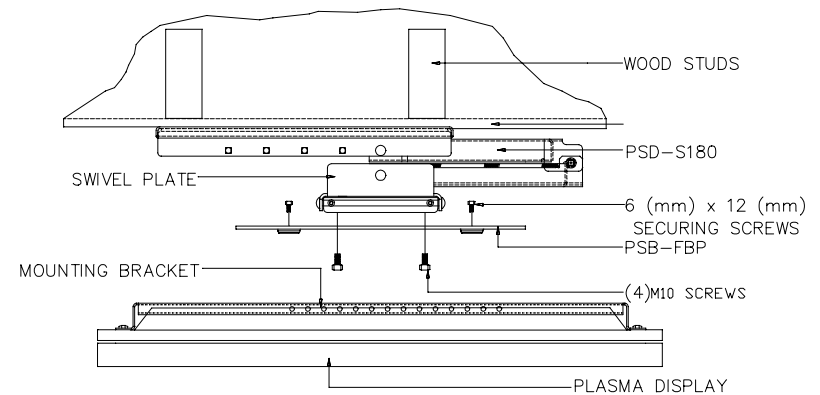
Secure the PSB-FBP flat plate to the front plate of the wall arm 4-1/2" centers mounting points using the (4) M10 x 20mm bolts (supplied).

NOTE: If you have the old PDM-Series mount use the 4-1/2" center mounting points and secure the bracket directly to the PSD-S180 front plate.

Once the PSB-FBP plate is secured push the arm fully back to the plate. (2 persons are required to complete the next step). Raise the plasma display with the mounting bracket attached and slip it through the flanges found on the PSB-FBP plate push left and down to lock them together.

Secure the plates with the two (2) 6 (mm) x 12 (mm) Securing Philip screws (supplied) Mounting points are found on the back of the PSB-FBP Universal Plate.

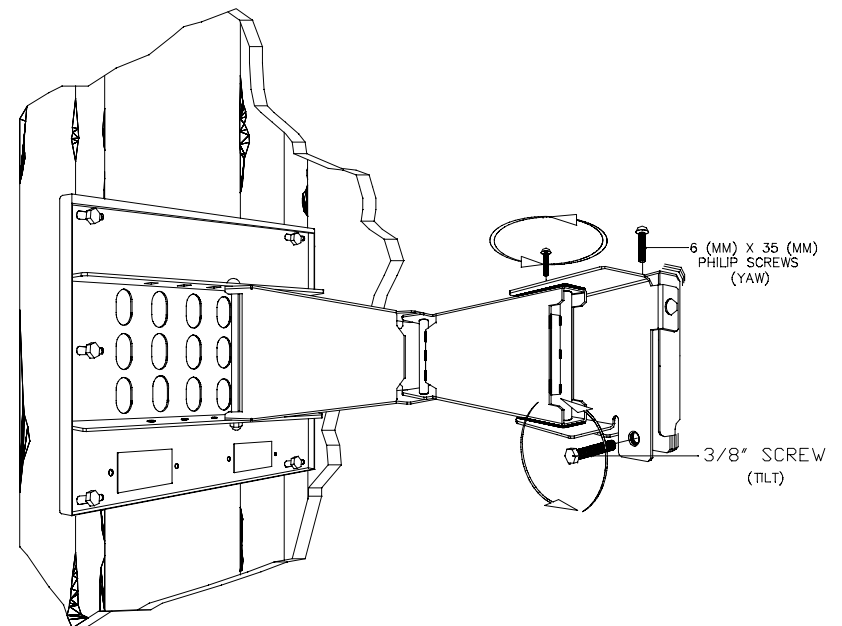
See Figure 2



STEP 4

Display screen adjustment use the two (2) 6 (mm) x 35 (mm) Philips head screws for (YAW) rotation and use the 3/8" screw to tilt the display.

See Figure 3



WARNING!

The ceiling should be capable of supporting a weight of at least five (5) times the plasmas display's weight. If it cannot, the ceiling must be reinforced. Proper installation procedure by qualified personnel as outlined in the installation instructions must be adhered to. Failure to do so could result in serious personal injury. For further information or ordering assistance contact us in the address in front of this page.

INSTALLATION INSTRUCTIONS

PSD-S180 PROJECTOR MOUNT



Supplying
the
world
with
superior
mounts

Touchboards

205 Westwood Ave, Long Branch, NJ 07740

Phone: 866-94 BOARDS (26273) / (732)-222-1511

Fax: (732)-222-7088 | E-mail: sales@touchboards.com