

IEC LOCK[®]

THE ORIGINAL & PATENTED
RETROFIT SOLUTION

DIREKTRONIK

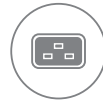
Dataprodukter utöver det vanliga



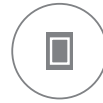


CONTENTS

- 03** - IEC Lock icon explanations.
- 04** - What is IEC Lock?
- 05** - How it works.
- 06** - Why IEC Lock?
- 07** - IEC Lock C13 Locking Connector.
- 09** - IEC Lock+ C13 Locking Connector.
- 11** - C13 Rewireable Locking Connector.
- 13** - C19 Locking Rewireable Connector.
- 15** - C19 Locking Connector.
- 17** - Angled C13 Locking Connector
- 19** - Angled C13 Rewireable Locking Connector.
- 21** - C14 Dual Locking Connector.
- 23** - C20 Dual Locking Connector.
- 25** - C13 Locking Outlet.
- 27** - C19 Locking Outlet.
- 29** - C13 Multi-Tier Locking Outlet.



Suitable for use
with any C20



Release tab



Release locking
mechanism button



Suitable for use
with any C14



Prevents accidental
disconnection



Nylon LSZH



C19 lockable outlet



C13 lockable outlet



C13 lockable
connector



C19 lockable
connector



Space saving



Rear release
locking mechanism

Guards against accidental disconnection of computers, servers and most electrical appliances.

WHAT IS IEC LOCK®?

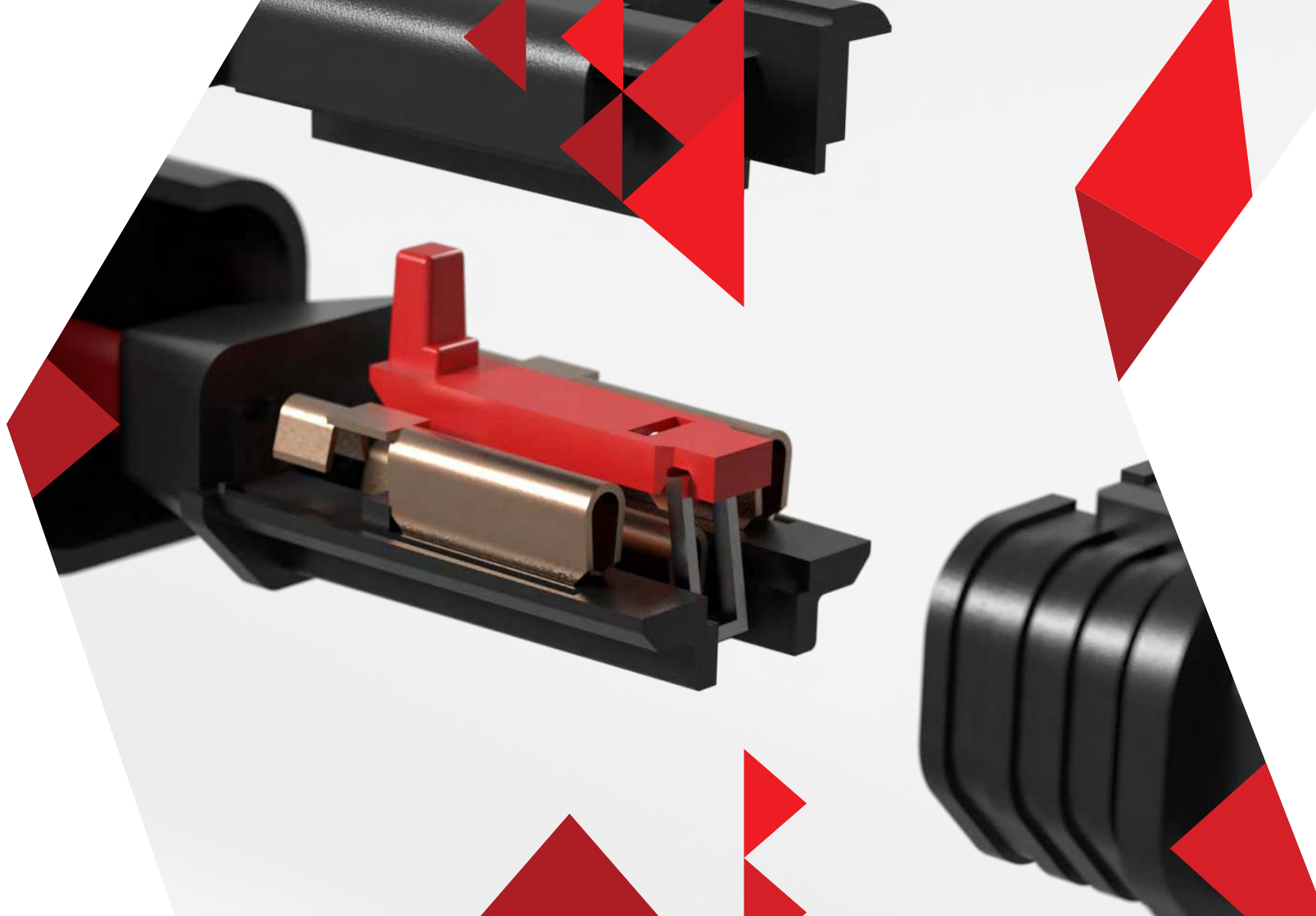
A unique patented mechanism for locking IEC connectors suitable for use with any standard C14 or C20 inlets.

- IEC LOCK is designed to help prevent accidental disconnection of computer and servers containing valuable data and critical equipment
- Unique 'patented' lockable Female C13 & C19 connector 'IEC Lock®' Connectors and outlets
- Suitable for various Data Communications applications that require a secure power source
- Suitable to prevent vulnerable appliances becoming disconnected due to vibration

HOW IT WORKS

- Pull the tab back and then push the connector into any standard IEC inlet, release the tab and it is locked in position
- Connector **CANNOT** be accidentally pulled or vibrated out of the inlet
- Slide back the 'red' tab to release and remove connector from inlet

“Unique secure locking mechanism which provides connection integrity”



WHY IEC LOCK®?

Features & Benefits

Safety - IEC Lock® guards against accidental disconnection.

Various colours - available to help identify individual power sources.

Security - IEC Lock® protects appliances that are vulnerable to vibration.

Versatility – Retrofit solution that suits any standard IEC inlet.

Flexibility - Total flexibility in assembling cable types, length and colour.

LSZH - IEC Lock® rewirable version offers flexibility whilst being LSZH (low smoke zero halogen) compatible.

IEC LOCK C13 LOCKING CONNECTOR

“The average total cost of unplanned application downtime per year is \$1.25 billion to \$2.5 billion.”

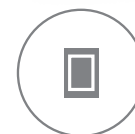
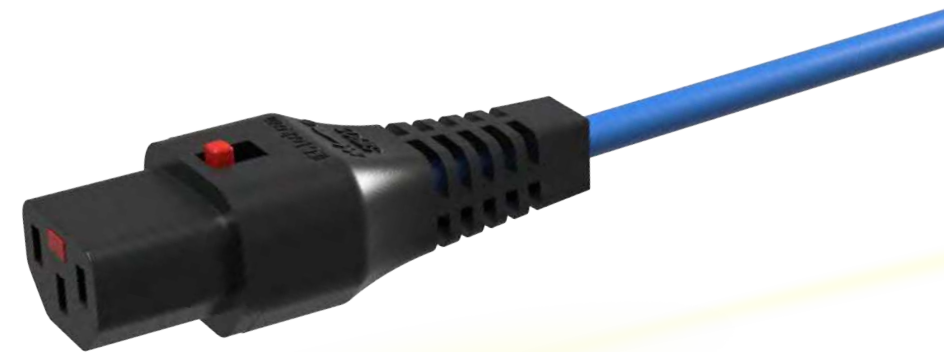
Features & Benefits

- Protects appliances that are vulnerable to vibration
- Connector cannot be accidentally pulled or vibrated out of the inlet



10A MAX / 250V (EU / Australia / Korea / China)

15A MAX / 125V / 250V (USA / Japan)



RELEASE LOCKING
MECHANISM



PREVENTS ACCIDENTAL
DISCONNECTION



C13 LOCKABLE
CONNECTOR



SUITABLE FOR USE
WITH ANY C14 INLET



IEC LOCK+ C13 LOCKING CONNECTOR

Features & Benefits

- Protects appliances that are vulnerable to vibration
- Connector cannot be accidentally pulled or vibrated out of the inlet
- Release from the rear when space is limited
- Increased visibility in narrow or tight spaces



10A MAX / 250V (EU / Australia / Korea / China)

15A MAX / 125V / 250V (USA / Japan)

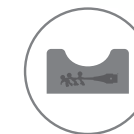
IEC
LOCK+



SUITABLE FOR USE
WITH ANY C14



SPACE SAVING



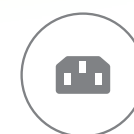
REAR RELEASE
LOCKING MECHANISM



PREVENTS ACCIDENTAL
DISCONNECTION



NYLON LSZH



C13 LOCKABLE
CONNECTOR



IEC LOCK+ C13 REWIREABLE LOCKING CONNECTOR

“Gartner recently estimated that the cost of IT downtime to businesses is around £4,300 per minute or £258,000 per hour”

Features & Benefits

- Rewireable - offering total flexibility when assembling cables
- Can be retrofitted
- LSZH - Low Smoke Zero Halogen
- Cable size up to 3 x 1.5mm² / 3 x 14AWG
- Up to 3 x 2.0mm² (Japan)



10A MAX / 250V (EU / Australia)

15A MAX / 125V / 250V (USA / Japan)

**IEC
LOCK+**



SUITABLE FOR USE
WITH ANY C14



SPACE SAVING



REAR RELEASE
LOCKING MECHANISM



PREVENTS ACCIDENTAL
DISCONNECTION



NYLON LSZH



C13 LOCKABLE
CONNECTOR



IEC LOCK C19 LOCKING REWIREABLE CONNECTOR

16A MAX / 250V (EU / Australia)

20A MAX / 250V (cUL)

Features & Benefits

- Rewireable - offering total flexibility when assembling cables.
- C19 Connector cannot be accidentally pulled or vibrated out of the outlet.
- A European, UL & Australian approved Rewireable C19 IEC Locking Connector.
- Protects appliances that are vulnerable to vibration.



C19 LOCKABLE
REWIREABLE CONNECTOR



PREVENTS ACCIDENTAL
DISCONNECTION



REAR RELEASE
LOCKING MECHANISM



NYLON
LSZH

IEC LOCK C19 LOCKING CONNECTOR

"Downtime can cost you, not only in lost revenue but it can also damage productivity, brand reputation, and have legal repercussions."

Features & Benefits

- Protects appliances that are vulnerable to vibration
- Connector cannot be accidentally pulled or vibrated out of the inlet



16A MAX / 250V (EU / Australia / China)

20A MAX / 125V / 250V (USA / Japan)



SUITABLE FOR USE WITH
ANY STANDARD C20



RELEASE LOCKING
MECHANISM



PREVENTS ACCIDENTAL
DISCONNECTION



C19 LOCKABLE
CONNECTOR

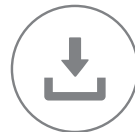
ANGLED IEC LOCK C13 LOCKING CONNECTOR

10A MAX / 250V (EU / Australia)

15A MAX / 125V / 250V (USA / Japan)

Features & Benefits

- Protects appliances that are vulnerable to vibration
- Connector cannot be accidentally pulled or vibrated out of the inlet
- Space availability / constraints
- Different angles for ease of access



SPACE SAVING



RELEASE LOCKING
MECHANISM



PREVENTS ACCIDENTAL
DISCONNECTION



NYLON LSZH



C13 LOCKABLE
CONNECTOR



SUITABLE FOR USE
WITH ANY C14

IEC LOCK C13 REWIREABLE ANGLED LOCKING CONNECTOR

"The average cost for 30 seconds of downtime during a major live sporting event to a broadcasting network is estimated to be around \$5m".

Features & Benefits

- Protects appliances that are vulnerable to vibration
- Connector cannot be accidentally pulled or vibrated out of the inlet
- Different angles for ease of access



10A MAX / 250V (EU / Australia)

15A MAX / 125 / 250V (USA / Japan)



SUITABLE FOR USE
WITH ANY C14



SPACE SAVING



RELEASE LOCKING
MECHANISM



PREVENTS ACCIDENTAL
DISCONNECTION



NYLON LSZH



C13 LOCKABLE
CONNECTOR



10A MAX / 250V (EU / Australia)

15A MAX / 125V / 250V (USA / Japan)



UNDERSIDE OF THE
C14 CONNECTOR



SIDE RELEASE
LOCKING MECHANISM



BOTTOM RELEASE
LOCKING MECHANISM



PREVENTS ACCIDENTAL
DISCONNECTION



RELEASE LOCKING
MECHANISM

DUAL LOCKING C14 IEC LOCK CONNECTOR

Features & Benefits

- Secure Locking Side and Bottom Tabs
- C14 Connector cannot be accidentally pulled or vibrated out of the outlet
- Universal cable available H05VV-F 3x1.00mm² / SJT 3x17awg
- A European, USA & Canada, Australian, and Japanese approved Dual Locking C14 IEC LOCK Connector that will lock into most C13 outlets
- Patent Pending



DUAL LOCKING C20 IEC LOCK CONNECTOR

Features & Benefits

- Secure Locking Side and Bottom Tabs.
- C20 Connector cannot be accidentally pulled or vibrated out of the outlet.
- A European, USA & Canada, Australian, and Japanese approved Dual Locking C20 IEC LOCK Connector that will lock into most C19 outlets.
- Patent Pending.

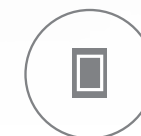


16A MAX / 250V (EU / Australia)

20A MAX / 125V / 250V (cUL)



SIDE RELEASE
LOCKING MECHANISM



BOTTOM RELEASE
LOCKING MECHANISM



PREVENTS ACCIDENTAL
DISCONNECTION



C20 DUAL LOCKING
CONNECTOR



IEC LOCK C13 LOCKING OUTLET

10A MAX / 250V (EU / China)

15A MAX / 250V (USA)

IEC Lock Appliance Outlet

Unique patented lockable female C13 IEC outlets guard against accidental disconnection of any standard C14 inlet. Protects appliances that are vulnerable to vibration by preventing accidental removal.



Features & Benefits

- Snap-in mounting from front
- Solder terminal or quick connect from single terminal
- Class 1 Protection
- Integral plug retention feature
- 6.3mm Terminals
- 1.5mm panel thickness



C13 LOCKABLE
OUTLET



PREVENTS ACCIDENTAL
DISCONNECTION



RELEASE LOCKING
MECHANISM



SUITABLE FOR USE
WITH ANY C14



IEC LOCK C19 LOCKING OUTLET

IEC Lock Appliance Outlets

Connectors and outlets can be used with standard IEC plugs and inlets. But for extra protection use both to ensure against accidental removal of power cables connected to PDU's, Servers, Network devices etc..

Features & Benefits

- Snap-in mounting from front
- Solder terminal or quick connect from single terminal
- Class 1 Protection
- Integral plug retention feature
- 6.3mm Terminals
- 1.5mm panel thickness



16A MAX / 250V (EU / Australia / China)

20A MAX / 250V (USA)



SUITABLE FOR USE
WITH ANY C20



RELEASE LOCKING
MECHANISM



PREVENTS ACCIDENTAL
DISCONNECTION



C19 LOCKABLE
OUTLET



MULTI-TIER C13 LOCKING OUTLET

Features & Benefits

- Space saving with easier accessibility
- Each outlet has an independent release locking mechanism
- The locking mechanism protects against accidental disconnection and maintains uptime
- The button to operate the mechanism is located to the side for easy access
- Nylon LSZH (Low Smoke Zero Halogen)
- 6.3mm Terminals
- 1.5mm panel thickness



10A MAX / 250V (EU / Australia / China)

15A MAX / 250V (USA)



12mm Saved

4 tier versions use 12mm less space than 4 individual IEC locks.



21mm Saved

6 tier versions use 21mm less space than 6 individual IEC locks.



SUITABLE FOR USE WITH ANY C14



SPACE SAVING



RELEASE LOCKING MECHANISM



PREVENTS ACCIDENTAL DISCONNECTION



NYLON LSZH



C13 LOCKABLE OUTLET





DIREKTRONIK

Direktronik AB tel. 08-52 400 700 www.direktronik.se

IEC LOCK

Scolmore International Limited,
Scolmore House, Mariner,
Lichfield Road Industrial Estate,
Tamworth, Staffordshire,
B79 7UL, UK

T: +44 (0)1827 63454

F: +44 (0)1827 63362

E: oemsales@scolmore.com

E: exportsales@scolmore.com

www.ieclock.com



MAR4151