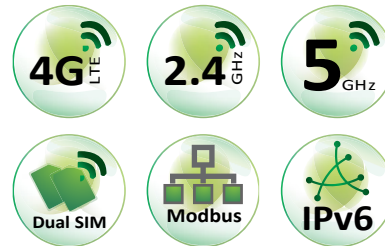


EW200 Series

Industrial LTE Cellular Gateway
Safeguard Mission-Critical Networks



Overview

The EW200 is an intelligent industrial grade gateway that combines IEEE 802.11b/g/n/ac WLAN and 4G LTE cellular technologies designed for critical infrastructure and industrial applications. It offers flexible connectivity over cellular and Wireless LAN for harsh environments, giving operations and IT real-time awareness with remote monitoring. It allows up to 4 Ethernet device links and provides dual SIM cards for failover redundancy to ensure uninterrupted connectivity.

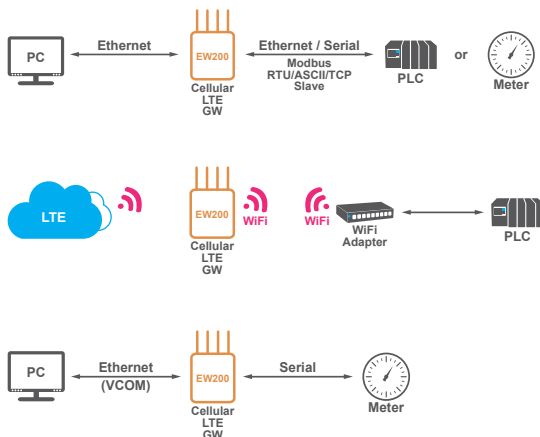
Moreover, it delivers best-in-class connectivity with multi path – Wireless, Ethernet, serial, digital I/O satisfies most applications. Global LTE options make it easy to get connected.

EtherWAN — "When Connectivity is Crucial."

Spotlight

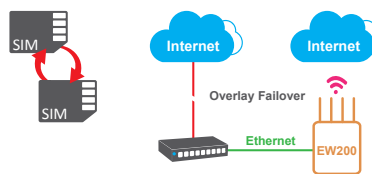
• Flexible Connectivity for Critical Applications

- Ethernet, serial, DI/DO and Modbus bridging for connecting diverse field assets
- Virtual COM allows for access, control, and management of a connected serial device
- Ideal for M2M and industrial IoT applications



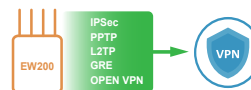
• Reliable and Uninterrupted Connection

- Equipped with dual SIM cards for failover
- Failover management for network reliability
- With Gigabit Ethernet, build in redundancy protocol-VRRP and recovery mechanism continuous communications between remote devices and control center are safeguarded



• Comprehensive Data Security

- IPSec, OpenVPN, PPTP, and L2TP VPN support up to 16 concurrent tunnels with max 100Mbps throughput (IPSec).



• Rugged Industrial Design

- Features metal housing with fan-less cooling, IP30
- Supports -30 to 70°C (-22 to 158°F) operating temperature
- Redundant power inputs on terminal block connector

Features

- Global HSPA+ and 4G LTE support and certified for the world's major carrier networks
- Ethernet, serial, DI/DO and Modbus bridging for connection of diverse field assets
- Equip with a dual-SIM LTE module with failover function
- WiFi Compliance IEEE 802.11 a/b/g/n/ac 2T2R; Multiple (8) SSIDs for privilege group devices or users
- 4 x Gigabit Ethernet port with tag based and port based VLANs easily to group control and relocate traffic pattern
- Fully protocol with NAT/Routing/IPv6 compatible with most IP network
- IPSec, OpenVPN, PPTP, and L2TP VPN support up to 16 concurrent tunnels with max 100Mbps throughput (IPSec)
- Firewall with SPI and IPS to prevent intrusion
- SNMP and Telnet CLI for administrator to manage system
- QoS and Bandwidth management for optimal bandwidth usage
- Seamless power failover between redundant DC 12V-48V wide range power input

Frequency Bands Region Code Optional

Sku Code	4G LTE		3G	2G	Region
	FDD LTE	TDD LTE	WCDMA	GSM/EDGE	
TA	B1(2100)/3(1800)/ 4(AWS)/5(850)/ 7(2600)/8(900)/ 28(700 APT)	B40(2300)	B1(2100)/2(1900)/ 5(850)/8(900)	B2(1900)/3(1800)/ 5(850)/8(900)	Taiwan, Australia
EUS	B1(2100)/3(1800)/ 5(850)/7(2600)/ 8(900)/20(800)	B38(TD 2600)/ 40(TDV 2300)/ 41(TD 2500)	B1/B5/B8	B3(1800)/8(900)	EU, Singapore, Malaysia, Philippines, Vietnam, Indonesia
JP	B1(2100)/B3(1800)/ B8(900)/B18(800 Lower)/ B19(800 Upper)/B26	B41(TD 2500)	B1(2100)/6(UMTS only)/ 8(900)/19(800 Upper)	—	Japan

Hardware Specifications

Cellular Interface

Standards

- Cellular Frequency Bands: (Please see order information for optional band)
- 4G LTE: FDD-LTE, TDD-LTE, Transfer rate (max): LTE FDD: 150Mbps down; 50Mbps up/LTE TDD: 130Mbps down; 35Mbps up
- 3G: WCDMA, Transfer rate (max): 42Mbps down; 5.76Mbps up
- 2G: GSM/EDGE, Edge Transfer rate (max): 236.8Kbps down & up

Antenna connector

- 2 x SMA Female

SIM Slot

- 2

WLAN Interface

WiFi

- 802.11 a/b/g/n/ac 2T2R (2.4G/5GHz selectable)

Frequency Band

- Europe CE/2.4 GHz (13 channels) 5GHz (4 channels)
- America/FCC 2.4GHz (11 channels) 5GHz (9 channels)
- Taiwan NCC/2.4GHz (11 channels) 5GHz (9 channels)
- Singapore iDA/2.4GHz (13 channels) 5GHz (9 channels)
- JAPAN TELEC & JATE/2.4GHz (13 channels) 5GHz (19 channels)

Encryption Security

- WEP, WPA 1/2-PAK & WPA 1/2 (8 x VAP/SSID)

Antenna connector

- 2 x SMA Male

Ethernet

Standards

- IEEE 802.3 10Base-T
- IEEE 802.3u 100BASE-TX/100BASE-FX
- IEEE 802.3ab 1000BASE-T
- IEEE 802.1x, Full duplex flow control

Ports

- 1 x RJ45 GE (WAN/LAN configurable) +4 x RJ45 GE

Physical Layer

- 10/100/1000Base-T

Serial

Ports

- 1 x RS232/RS485

I/O

DI/DO

- 1 x Digital In ("Logic 0": 0-2V, "Logic 1": 5V-30V)
- 1 x Digital Out (Relay Mode, up to 30V/1A)

USB

Standards

- USB 2.0

Ports

- 1 x USB Type A

Functions

WiFi LAN

- AP Router, WDS, WDS Hybrid Modes

VLAN

- Port-based, Tag-based VLAN

Port Forwarding

- Virtual Server/Computer, DMZ Host, PPTP/L2TP/IPSec Pass-through

Routing

- Static, Dynamic: RIP1/RIP2, OSPF, BGP

QoS

- Policy-based Bandwidth Control and Packet Flow Prioritization

Virtual COM

- RFC2217, TCP Client, TCP Server, UDP

Modbus

- Modbus Slave; Modbus Gateway for Modbus TCP, Modbus RTU/ASCII Master/Slave Access

VPN

- IPSec, OpenVPN, PPTP, L2TP, GRE

Firewall

- SPI Firewall with Stealth Mode, IPS

Event Engine/Event Handling

- Managing/Notifying Events: DI, DO, Modbus, SMS, Syslog, SNMP Trap, Email Alert, Reboot

Device Management Solution

- eVue (Q4, 2018)

Power

Input

- DC 12V-48V (Terminal Block)

Power Consumption

- 25W Max.

Mechanical

Dimension

- 62 x 135 x 160mm (with DIN Rail kit)

Weight

- 1.2Kg (2.64lb)

Installation

- DIN-Rail

Environment

Operating Temperature

- -30 to 70°C (-22 to 158°F)

Storage Temperature

- -40 to 85°C (-40 to 185°F)

Ambient Relative Humidity

- 5% to 95% (non-condensing)

Regulatory Approvals

Safety

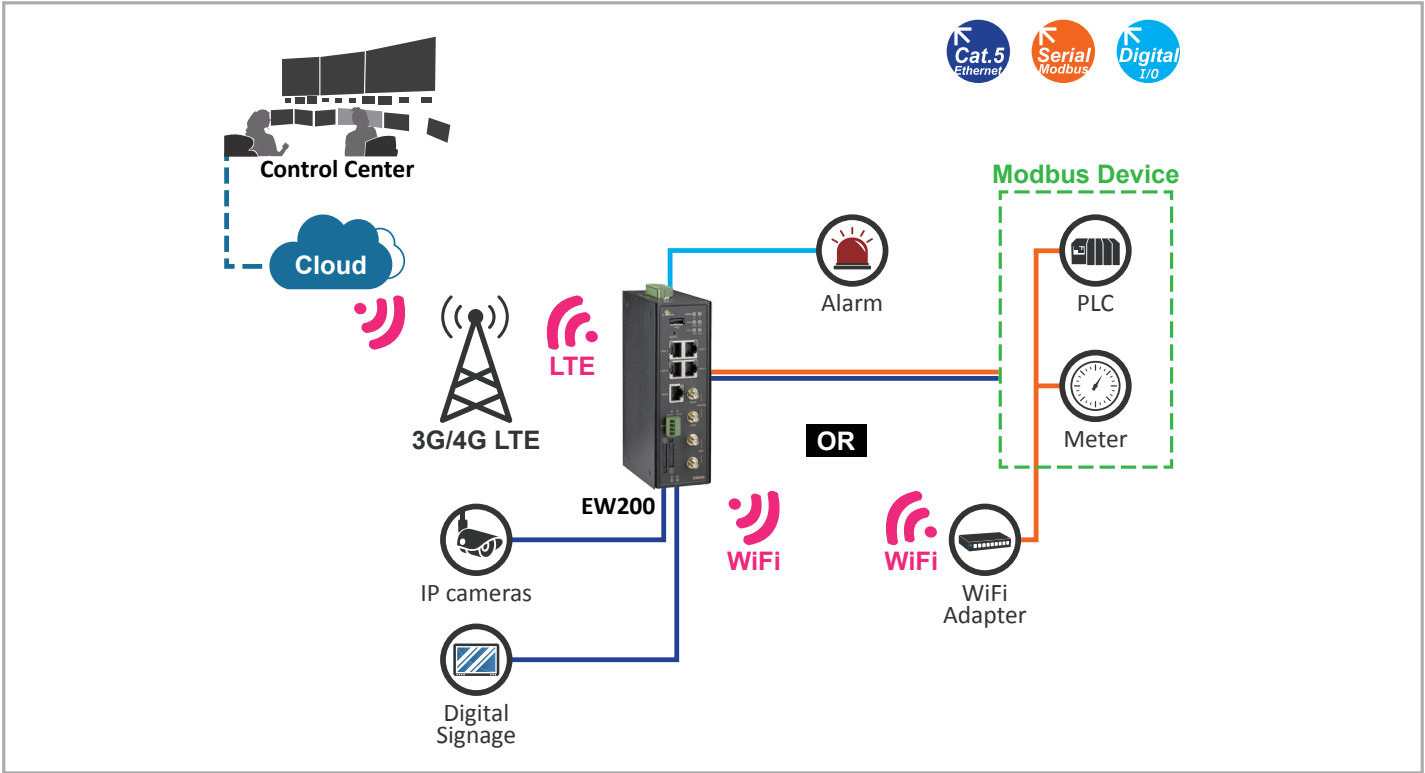
EN 60950-1

EN 62368-1: 2014

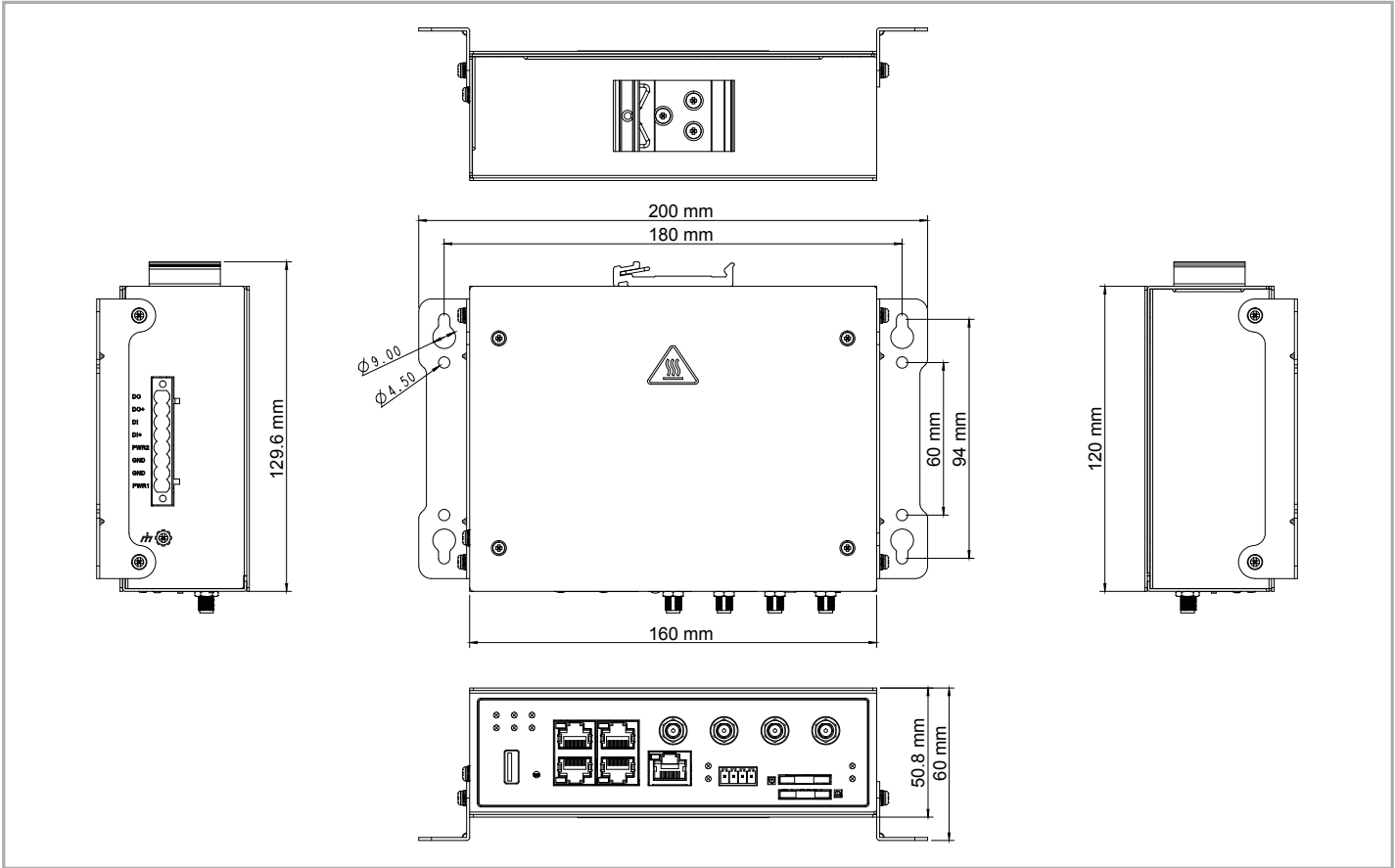
Emissions/Immunity

CE/NCC BSMI

Application Diagram



Dimensions







Ordering Information

Model

EW200-EUS	Industrial LTE Cellular Gateway-EUROPE & SOUTH ASIA
EW200-TA	Industrial LTE Cellular Gateway-TAIWAN & AUSTRALIA

EW200 Industrial LTE Antenna and Accessory

No	Photo	Category	EW Model	dBi	Frequency	Description	Note
1		LTE	LA-1	1/3	790-862/ 1710-2180/ 2300-2700MHz	Cellular Omni Antenna, N Male	IP67
2		WiFi	WD-1	4/5	2.4/5GHz	WiFi Omni Antenna, N Male	IP67
3		WiFi	WS-1	6	5GHz	WiFi Omni Antenna, N Male	IP67
4		Surge Protector	SP-1	-	-	0-6 GHz Lightning Protector (Copper), N Female To N Male	IP65