

33-1500 series SFP Media Converter

33-1500 series Fiber Converter has two SFP sockets. It can convert two optical digital signals of SFP modules, which have same speed, among different wavelength, different distance and different mode (singlemode/multimode, UTP/Fiber). It is popular application in all kind of optical digital signals, like Ethernet signals, ATM signals, SDH signals, and control signals etc

Features

- Conversion of optical signals can be carried out between multi/multimode optical fiber, between single/multimode fibers, or between single/single mode fibers when the both SFP modules have same speed. Supporting
- conversion of 2~1250Mbps optical digital signals.
- Conversion speed fast, less delay, high efficiency
- Interfaces: SFP sockets.
- Transmission Rate: Multi rate up to 2.5Gbps
- Power : External or Internal switching power: AC100~240V/DC5V
- LED Lights: Power: status of power supply, FX1 Link, FX2 Link: SFP connection indicator, for machine control and trouble adjusting.
- Dimension:26x71x93mm(HxWxD)
- Ambient temperature : 0 ~ +50°C
- Storage temperature : - 20 ~ +70°C
- Humidity : 5% ~ 90%



[Exclude SFP](#)

33-1505/06 14 Slots Media Converter RACK for Converter Card

It is acceptable for the most 14 sets of different Media Converter Cards within a rack-mountable chassis which is supplied with unified power. Installing at the center of network, it can not only reduce the links, simplify the structure, but also ease for management and maintenance. 33-1505/06 can be tidily placed at any network environment. The external form of RACK is simple and tidy. It is ready for 10/100Mbps, 10/100/1000Mbps Converter Card to be plugged in, and will be the best solution of network connections for the continuous development of network.

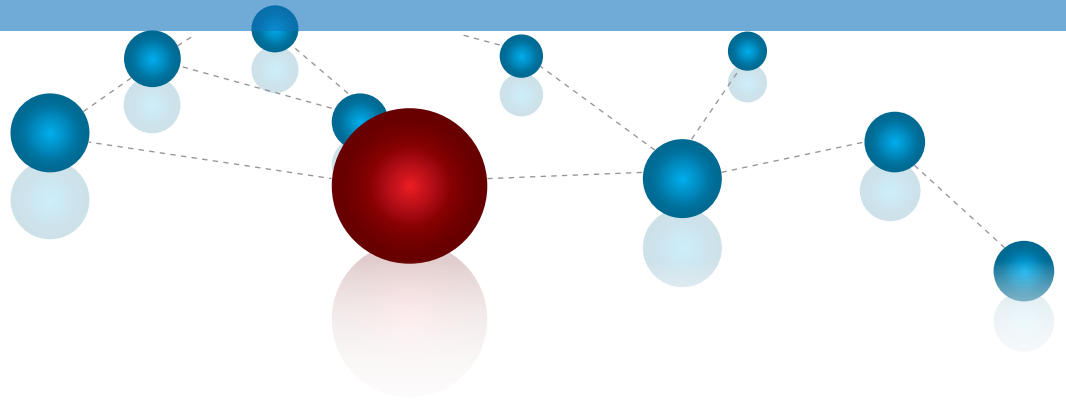
Features

- The power of the Rack can be supplied by the type of single power or dual power. Adopting dual power supply, the load of each power can be reduced and the life of the power would extend. When one power supply is at fault, the other one can still work independently. It would enhance the reliability of the RACK. Supplying the converters or powers to be plugged and played.
- 2U high: 19 inch standard design
- It is possessed of stable performance, large capacity of power supply, and ease for management and maintenance.



Technical Specifications

Capacity	14 slots available. Every 10/100/1000Mbps converter card occupies one slot.
Power input	AC 100~260V,50~60Hz or DC -48V; output : DC +5V 12A
Vein	≤50mv
Noise	≤50mv
Power protection	protection from over voltage, over current and short circuit 0 ~
Operating temperature	+50°C
Storage temperature	-20°C~70°C
Humidity	5% ~ 90%
Dimensions	485(wide) x 245(length) x 90(high) mm



Ordering Information

P/N	Gigabit Ethernet SFP Interface
33-1500	2.5G Multi rate SFP-SFP converter
33-1505	19" 2U 14 Slots chassis for installing the 14 sets of 33-1500 series Media Converters Card with dual 230VAC power supply
33-1506	19" 2U 14 Slots chassis for installing the 14 sets of 33-1500 series Media Converters Card with dual -48VDC power supply