



# THE SCAN IS JUST THE START

# V4500



Rugged design  
**Seamless Experience**

## Start up in seconds. Do data differently.

Automate and simplify workflows with digital data capture.

### CAPTURE DATA



### EXCHANGE DATA



### MANAGE DATA



## Get better visibility in your facility

Ruggedised performance, purpose-built for manufacturing, warehouses and the toughest industrial environments.

### Get Better With Brady

- ▶ Replace traditional data entry
- ▶ Remove excess work movement
- ▶ Strong Bluetooth BLE 5.0
- ▶ Industrial ruggedisation
- ▶ Battery life that lasts a full shift with over 75,000 scans

## OPEN IT UP. POWER IT ON. GET IT DONE



### SCAN

Conquer tiny barcodes and hard to read surfaces with high-performance scanning



### CONNECT

Change settings right on the scanner with dynamic screen visual representation



### CONFIGURE

Easily parse and manage data to transform traditional workflows

# V4500

Industrial design  
**INTUITIVE FUNCTIONALITY**

## The rugged versatility you need. The seamless experience you've been waiting for.

Get smarter with Brady Intelligent Manufacturing



### AUTOMATE

► Automate your business with accuracy



### CONNECT

► Connect your operations seamlessly



### STREAMLINE

► Streamline your workflows sustainably



## Programming doesn't have to be painful

Customise how you work with the intuitive interface. Select what you need for your workflow. Start with a simple scan and easily connect to the cloud and your ERP system.

## Complete your intelligent ecosystem

Optimise your capabilities by pairing your V4500 with Brady printers & materials



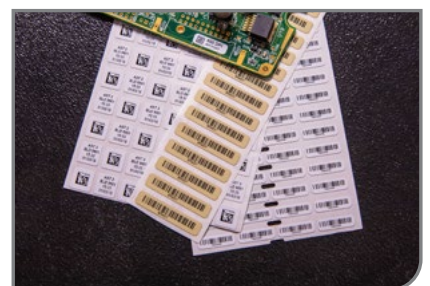
### BRADY PRINTERS

► Effortless operation. Precision perfected. Downright durable. Our powerful benchtop and portable printers help you get the job done right - every time.



### BRADY SOFTWARE

► Unleash the full potential of your Brady printer with our label creation software. We make it easy to make premium labels in no time.



### BRADY MATERIALS

► Choose from 1000s of purpose-built materials specifically designed for the applications you need. Get the right label to get the job done right.

► Learn more at [bradyeurope.com/V4500](https://bradyeurope.com/V4500) or scan to watch the overview video



## V4500 Barcode reader

Article No.	Order Reference	Description
177231	BR-V4500-BTR	V4500 Barcode Reader Kit
177233	BR-V4500	V4500 Barcode Reader
322619	BR-V4500-KIT-EU	V4500 Barcode Reader Kit EU
322620	BR-V4500-KIT-UK	V4500 Barcode Reader Kit UK
322621	BRA-V1100-KIT-EU	V1100 Kit for V4500 Barcode Reader EU
322622	BRA-V1100-KIT-UK	V1100 Kit for V4500 Barcode Reader UK
322623	BRA-V1300-KIT-EU	V1300 Kit for V4500 Barcode Reader EU
322624	BRA-V1300-KIT-UK	V1300 Kit for V4500 Barcode Reader UK



**V4500 kit includes:** scanner, cradle, battery, AC adapter, USB cable and power cord



**V1100 kit includes:** a spare charger, two batteries, an AC adapter and a power cord



**V1300 kit includes:** cradle, AC adapter, USB cable and power cord

## V4500 Accessories

Article No.	Order Reference	Description
177234	BRA-V1200	V1200 Battery for V4500 Barcode Reader
177235	BRA-V1300	V1300 Cradle for V4500 Barcode Reader
177236	BRA-V1100	V1100 Spare Battery Charger for V4500 Barcode Reader
177237	BRA-USB-RJ50-1	USB to RJ50-1 Cable for V4500 Barcode Reader
177238	BRA-USB-RJ50-28	USB to RJ50-28 Cable for V4500 Barcode Reader
177239	BRA-RS-RJ50-1	RS232 to RJ50-1 Cable for V4500 Barcode Reader
177240	BRA-RS-RJ50-28	RS232 to RJ50-28 Cable for V4500 Barcode Reader
177241	BRA-AC-9V	AC Adapter for V4500 Barcode Reader

V1200 batteries have a 1 year warranty. The 3 year warranty only applies to kits.

## Physical characteristics

Dimensions	152.00 mm (W) x 75.00 mm (H) x 113.00 mm (D)
Weight (kg)	1.38
Ingress Protection Rating	IP65

## Performance characteristics

Field of View	High Density Field: 30° Horizontal by 20° Vertical, Wide Field: 50° Horizontal by 33.50° Vertical
Focal Point	Approximately 100 mm
Sensor	CMOS 1.2 megapixel; (1280 x 960) grey scale
Optical Resolution	High Density Field: 960 x 640, Wide Field: 960 x 640
Pitch	± 65° (from front to back)
Skew	± 60° from plane parallel to symbol (side-to-side)
Rotational Tolerance	+/- 180°
Symbol Contrast	15% minimum reflectance difference
Target Beam	Single blue targeting bar
Ambient Light Immunity	Sunlight: Up to 96,890 lux
Drop Test	Resistant to 115 kg crushes, Resistant to military-grade shocks (MIL-STD-810G), Resistant to 1.8 metre drops
Power Requirements	10 Watts
Battery Type	Rechargeable Lithium-ion Battery
Number of Scans	Up to 75,000 scans per charge
Reader/Scanner Unit Communication	Bluetooth 5 Low Energy (class II)
Charge Station Communication Interfaces	RS232, USB 2.0 (generic HID, HID keyboard, virtual com port)
Warranty	3 years

## User environment

Operating Temperature	-20°C to 50°C
Storage Temperature	-30°C to 65°C
Operating Humidity	5% to 95% (non-condensing)
Decode Capabilities - 1D	BC412, Codabar, Code 11, Code 128, Code 32, Code 39, Code 93, GS1 DataBar, Hong Kong 2 of 5, IATA 2 of 5, Interleaved 2 of 5, Matrix 2 of 5, MSI Plessey, NEC 2 of 5, Pharmacode, Plessey, Straight 2 of 5, Telepen, UPC / EAN / JAN, Trioptic
Decode Capability - 1D Stacked	Codablock F, Code 49, GS1 Composite (CC-A/CC-B/CC-C), MicroPDF, PDF417
Decode Capability - 2D	Aztec Code, Data Matrix, Data Matrix Rectangular Ext'n, GoCode® (proprietary--add'l license req'd), Grid Matrix, HanXin Code, Micro QR Code, QR Code, QR Model 1
Decode Capability - Postal	Australian Post, Canada Post, Intelligent Mail, Japan Post, KIX Code, Korea Post, Planet, Post-Net, UK Royal Mail, UPU ID-tags
Image Output Options	PGM, JPEG
Field Selection	High Density or Wide Field
Advanced Data Editing	JavaScript
Data Structure Validation	HIBC UDI, ISO 15434, ISO 15418

## Typical working ranges

	3 mil Code 39	7.5 mil Code 39	10.5 mil GS1 Databar	13 mil UPC	5 mil DM	6.3 mil DM	10 mil DM	20.8 mil DM
Minimum	90 mm	32 mm	10 mm	18 mm	33 mm	23 mm	10 mm	18 mm
Maximum	112 mm	132 mm	210 mm	270 mm	105 mm	140 mm	170mm	333 mm

**Note:** Working ranges are a combination of both the wide and high density fields. All samples were high quality barcodes and were read along a physical center line at a 10° angle. Measured from the front of the reader. Test conditions may affect working ranges.

